



EDITION
2020



Minimes Art District

21-25/01/2020

Opening hours

Tuesday 21/01: 4 pm - 9 pm

Opening with drinks in the galleries

Oyster bar and drinks at “Café des Minimes”

Wednesday 22/01 - Friday 24/01: 11 am - 6 pm

Saturday 25/01: 11 am - 7 pm

During the cultural and artistic events which take place yearly in Brussels, the art and antiques galleries located on the rue des Minimes have organized an open-door week. The rue des Minimes has the largest concentration of art galleries in Brussels.

The rue des Minimes is in the Sablon art district next to the Place du Grand Sablon, well known for its galleries and fine restaurants. It is a five-minute walk to the Royal Museum of Fine Arts (Breughel to Magritte), the Museum for Musical Instruments, and the Brussels temple for arts BOZAR.

The gallerists from the rue des Minimes are looking forward to welcoming you to the heart of Brussels' artistic and cultural life from January 21st to January 25th, 2020.

--

A l'occasion des événements culturels et artistiques qui se dérouleront à Bruxelles fin janvier, les Marchands d'Art de la rue des Minimes se réuniront pour faire porte ouverte et vous accueillir dans leurs galeries.

A deux pas de la place du Grand Sablon, tout proche du musée des beaux-arts de Bruxelles, du musée des instruments de musique et du temple de la culture BOZAR, la rue des Minimes concentre le plus grand nombre de galeries d'art et d'antiquités à Bruxelles.

L'équipe du Minimes Art District vous souhaite la bienvenue au coeur de la vie artistique et culturelle bruxelloise et se réjouit de vous accueillir du 21 au 25 janvier 2020.

--

Ter gelegenheid van de verscheidenen exposities in Brussel die jaarlijks plaatsvinden eind januari hebben de verschillende galerieën gelegen in de Minimenstraat, besloten om samen een open deur te organiseren.

De Minimenstraat vlak naast de Grote zavel, het paleis voor schone kunsten, het Museum voor muziekinstrumenten en de cultuur tempel BOZAR, heeft de grootste concentratie van kunst en antiek galerijen in Brussel.

De deelnemers van het Minimes Art District hebben zullen u graag verwelkomen in het hart van het Brusselse centrum voor cultuur en kunst vanaf 21 tot en met 25 januari.

JO DE BUCK

Jo de Buck is a dealer of international repute, based in the Sablon district of Brussels.

For more than 20 years, he has exhibited and provided expertise for the major tribal and antique art shows around the world, including Parcours des Mondes (Paris), Bourgogne Tribal Show (France) and the Tribal and Textile Art Shows (San Francisco/Los Angeles/New York).

He is recognised in his field of specialization both by colleagues and collectors, and has always placed an emphasis on authenticity and how to recognize it. He is still an active dealer and is a specified expert for several courts in Belgium.

Rue des Minimes 43
1000 Brussels, Belgium

Tel: +32 475 84 17 29
jdbtribalarts@gmail.com
www.jodebuck.com

Kuba Bushoong box

Hard Wood 19th cent. R.D.Congo

Size: W. 29 cm H. 15 cm

Provenance: Hans Röthlingshöfer, Basel, Switzerland

Publication + exhibition: Expo cat.: "Die Kunst von Schwarz-Afrika"



MARTIN DOUSTAR

Martin Doustar has been an art dealer for the past fifteen years. In 2016 he opened up a new gallery in the heartland of Sablon, dedicated to Primitive and Ancient Arts, including Asian and Precolumbian Art.

The selection of works he presents meets the same criteria and standards he sets for himself as a collector, through the search for pure and authentic artistic expressions, out of market trends, and with an uncompromising aesthetic rigor.

Rue des Minimes 15
1000 Brussels, Belgium

Tel: +32 497 45 78 21
Doustar79@aol.com
www.martindoustar.com

Overmodeled skull

Iatmul people, Middle Sepik, Papua New Guinea
19th century
Human skull, resin, clay, pigments, hair, shells
Size: H. 21 cm

This magnificent overmodeled skull was collected at the turn of the twentieth century in Papua New Guinea, and taken to what was then the Austro-Hungarian Empire, where it entered an important Czech collection. The piece remained in this family till recent years, when we had the opportunity to acquire it, along other Oceanic art masterpieces collected at the same period... Another remarkable overmodeled skull which shows very similar decorum and refined naturalistic features was also in the collection of the Museum Naprstek in Prague almost a century ago. It later sold by exchange to the Barbier-Mueller Museum in Geneva where it can still be admired. These two heads were possibly modeled by the same hand, or collected in the same village during the same period.



KITSUNE GALLERY

Devoted to Japanese art reflecting the inner soul of Japan.

The items selected are primarily of native taste. Kitsune aims to embody Japanese culture and its rich tradition through different art forms...

Exploring the beauty in daily life characterized by simplicity that is unpretentious and original. Our selection encompasses tea ceremony art, folk art, scholar art, samurai art and religious art.

Rue des Minimes 55
1000 Brussels, Belgium

Tel: +32 476 87 85 69
E-mail : arie.vos@kitsune.be
www.kitsunegaroo.com
Instagram : [kitsune_japanese_art](#)

Opening hours (Wednesday to Saturday) : 12h00 - 18h00,
or by appointment.

Seto chaire

Late 18th century

Size : 10,4 cm in height (including lid)

ceramic tea container for the tea ceremony
Iron glazed body covered with a rice straw ash glaze for the “nadare” (dripping pattern)

This item comes with a bone lid, a shifuku (silk storage bag) and a kibako (storage box)



PATRICK MESTDAGH

Ondine and Patrick Mestdagh have been living in the heart of the Sablon in Brussels for 25 years. Lovers of shaped objects, they act at the “coup de coeur”. During their many trips, their eyes are drawn to non-European objects, from Oceania to Africa, including Indonesia and North America. Exploring these plural cultures, they like to mix the beautiful and the everyday.

The gallery takes part in international fairs such as The winter Show in New York and Masterpieces in London. The gallery is also a member of the Royal Chamber of Antiquaries and Dealers of Art in Belgium.

Rue des Minimes 29
1000 Brussels, Belgium

Tel: +32 2 511 10 27
Mobile : +32 475 467 315
info@patrickmestdagh.com
www.patrikmestdagh.be

A breadfruit tree axe, Tigo

made of wood and tortoise bone

Wuvulu, formerly Matty Island, Archipel Bismarck

Size: 27,5 cm ; 10 5/8 in

Provenance:

- Collection William Downing Webster (1863-1913), Londres / Bicester
- Augustus H. Lane Pitt Rivers (1827-1900), Farnham
- Pitt Rivers Museum, Farnham (inv. n° 324.8736)
- Collection Nelly Van den Abbeele, Bruxelles / Amsterdam
- Christie's, Amsterdam, Important Oceanic art from the Collection of Mrs. Nelly Van den
- Abbeele, 6 décembre 1999, n° 525
- Collection Udo et Wally Horstmann, Zug, acquis lors de cette vente
- Collection privée européenne
- (inscription manuscrite : “Matty Island Bone Axe. BT Webster. May 1897. P”)

Reference:

Cross-cultural interaction on Wuvulu Island, Papua New Guinea, Journal of Archaeological Science, Kononenko, Torrence, Barton and Hennell, 2009

Wuvulu is a coral atoll located 150 km north of the New Guinea mainland. Wuvulu and its neighboring islands were the scene of a collecting frenzy by Germans. Bismarck Archipelago and the northern Solomon Islands became a German protectorate in 1885 and was the first part of the German colonial empire.

Initially, objects collected on Wuvulu as part of a trip to search for plantation laborers were sent to the Berlin Museum. The ethnology curator, Felix von Luschan, was fascinated because he noticed that the particular forms and styles of the Wuvulu objects, particularly turtle bone cleavers were very similar to those from the Micronesian islands to the north rather than those of their closest neighbors in New Guinea. He therefore suspected the material culture might reflect a history of migration in the region.



SEGHERS & PANG

Prof. dr. Ching Lin Pang (Catholic University of Leuven, University of Antwerp) and Dirk Seghers (MA Germanic Philology, MA Sinology, Artistic Director, Curator) share a common passion for beauty as source of inspiration and comfort. Main criteria for selecting the objects: authenticity, artistic value and the story that the object tells. They have sold their objects to collectors and galleries in San Francisco, New York, Québec, Kyoto, Paris, Cologne, Beijing..

Seghers & Pang Fine Arts are specialized in European medieval art and Chinese ceramics.

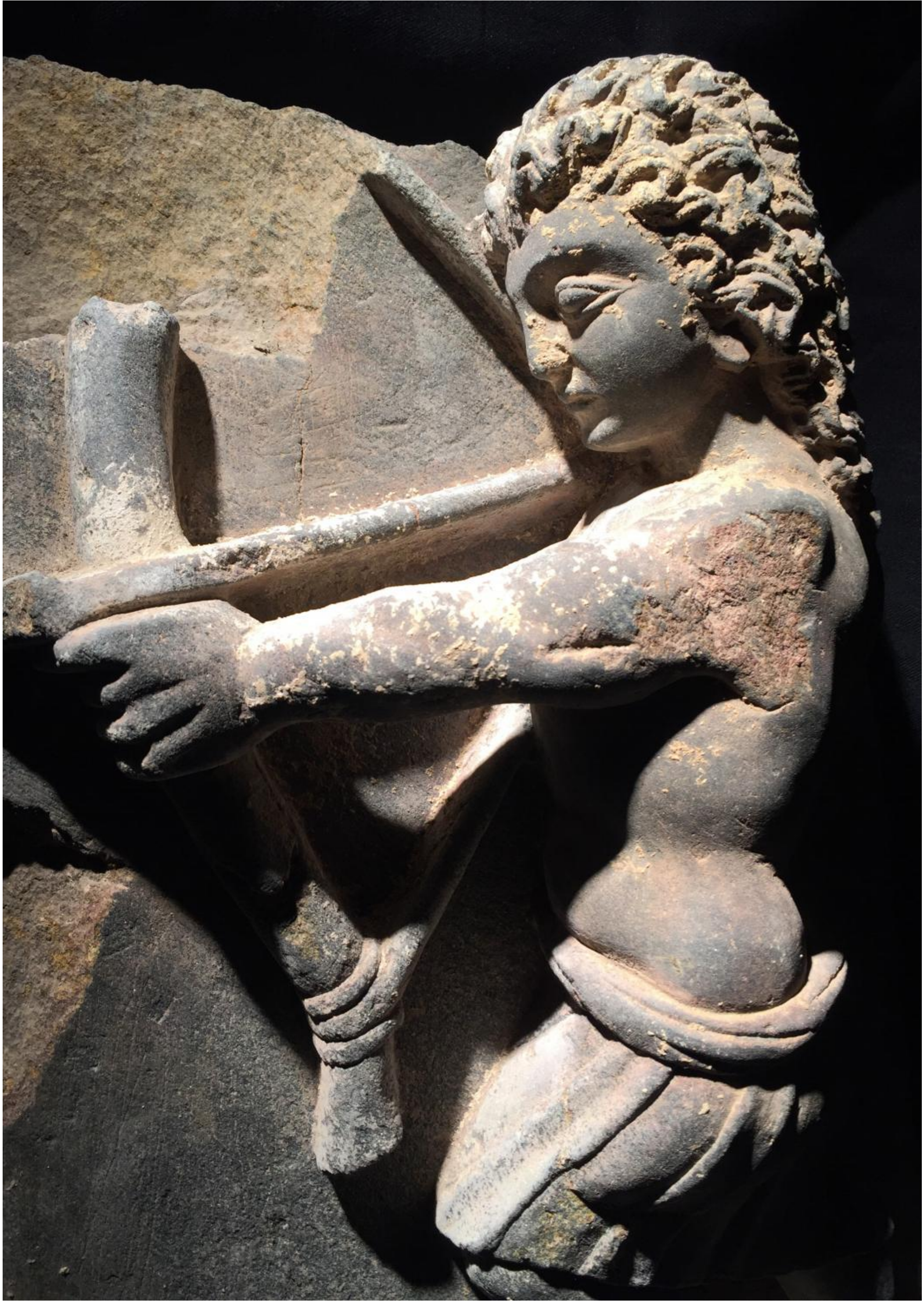
They will be pleased to welcome you in their gallery that they share with their friend and colleague Don Verboven (Verboven Exquisite Objects). It is located in the heart of the Sablon, the neighbourhood of high-end antique shops in Brussels.

Rue des Minimes 25
1000 Brussels, Belgium

Tel: +32 472 20 38 44
seghers.dirk@gmail.com
www.anticstore.art/antique-dealer/seghers-pang-fine-arts
Instagram: segherspang

We will be open every day during the event from 11 am to 6 pm

Archer
Gandhara
2nd-4th century
grey schist



RUT VAN CAELENBERGH

Bathed in African art since childhood, Rut opened a gallery in 1995, and since that day has offered important works of great artistic value. The quality of her pieces is confirmed by their presence in renowned museums, publications, sales rooms and collections.

She particularly wants to stand out with original pieces. The emphasis is on artworks from Africa but her interest and knowledge goes far beyond.

Rut is always interested in discovering fine works of art. She will be pleased to help you with professional expertise, appraisal services and art consult.

Rue des Minimes 47
1000 Brussels, Belgium

Tel: +32 476 435 876
info@vancaelenbergh.com
www.vancaelenbergh.com

Opening hours:
Tuesday to Saturday from 12:00 - 18:00
Or by appointment

Sakalava statue
attributable to the sculptor Horatsy
Madagascar
Late 19th - early 20th
Size: 86cm

Collected in situ by M.Depoorter, ex gendarme stationed in Madagascar



FRANK VAN CRAEN

After many years of appreciation for antique Japanese furniture and extensive relationships with renowned dealers from both Europe and Japan, he decided it was time to share his love for tansu with all people with a passion for beauty.

In 2000 he moved into a gallery in the centre of Antwerp and then in 2008 to the Sablon neighbourhood in Brussels.

He gladly invites you to browse through his online catalogue and discover the beauty of antique Japanese furniture and tribal art.

Rue des Minimes 49
1000 Brussels, Belgium

Tel: +32 475 66 81 87
frank.van.craen@skynet.be
www.frankvancraen.be

From April 1, 2020 new address:

Eglantierlaan 3
2020 Antwerp, Belgium

Akan – Abron figure

Early 20th Century

Size: 32 cm

Ex. Private collection, The Netherlands



CAFÉ DES MINIMES

Located between the very authentic Marolles and Sablon districts, the Café des Minimes offers a space where it is good to relax with friends.

Local and seasonal products are given pride of place and the drinks have been selected with particular attention. Our wines are all natural while our beers come from micro-breweries.

In addition, the Café des Minimes also aims to be a cultural space where any type of event can take place.

Café des Minimes is pleased to welcome you on the opening of Minimes Art District Tuesday 21/01: 4 pm - 9 pm with an Oyster bar and drinks.

Rue des Minimes 60
1000 Brussels, Belgium

Tel: +32 2 355 37 11
www.cafedesminimes.com





Minimes Art District

21-25/01/2020

Opening hours

Tuesday 21/01: 4 pm - 9 pm

Opening with drinks in the galleries

Oyster bar and drinks at “Café des Minimes”

Wednesday 22/01 - Friday 24/01: 11 am - 6 pm

Saturday 25/01: 11 am - 7 pm