



SKINNER

American Indian & Ethnographic Art

Sale 3316B | November 9, 2019 | Boston

American Indian & Ethnographic Art





Specialist



Michael Evans

Department Director
508.970.3254

Auction Information

Auction 3316B

Saturday, November 9
10AM

63 Park Plaza
Boston, MA

Preview

Thursday, November 7
12 to 5PM

Friday, November 8
12 to 7PM

Saturday, November 9
8 to 9:30AM

Absentee Bidding

T: 617.874.4318
F: 617.350.5429

General Inquiries
617.350.5400

SKINNERLIVE!
skinnerinc.com

View all lots online at www.skinnerinc.com

COVER: 373; INTERIOR FRONT COVER: 294; INTERIOR BACK COVER: 76; BACK COVER: 339



SKINNERLIVE!

BIDS  U A R E



Lot 278:
Ojibwa Pictorial Beaded
Medicine Charm, fourth quarter
19th century, 10 x 7 in.

Live Online Bidding



Skinner
online@skinnerinc.com
508.970.3279



Bidsquare
support@bidsquare.com
800.657.0092

Table of Contents

1	Auction & Specialist Information
2	Online Bidding
4	Provenance
5	Lots 1–624
80	Conditions of Sale
81	Absentee Bid Form
82	Company Directors & Specialty Departments
83	Administrative Staff & Client Services

Please Note: All lots sold subject to our Conditions of Sale.

Please refer to page 80 of this catalog for the full terms and conditions governing your purchase.



Copyright © Skinner, Inc. 2019
All rights reserved

MA LIC. 2304

Provenance

The Bertram and Ruth Malenka Collection of Southwest Pottery, Belmont, Massachusetts

The Arthur Rothenberg Collection of African Art, New York City

The Dr. John Schaeffer Collection of Eskimo Art, Lake Monroe, Florida

A Private Collection of Native American Artifacts, Oyster Bay, New York

A Private Collection of Eskimo and Northwest Coast Art, Stowe, Vermont

The Justin Cobb III Collection of Eskimo Art, Amherst, Massachusetts

The Dr. John Beach Driggs Collection of Eskimo Art, Delaware

A Private Collection of Oceanic Clubs, Philadelphia, Pennsylvania

A Private Collection of African Artifacts, West Hartford, Vermont

A Private Collection of Hawaiian Stone Artifacts, Greenbrae, California

A Private Collection of American Indian artifacts, New Braintree, Massachusetts

A Private Collection of Eskimo and Northwest Coast Art, Santa Fe, New Mexico

1

Indonesian Kris Handle, late 19th century, wood, ornately carved handle with dark smooth patina on a raised wood base, lg. 3 1/2 in.
\$400-600

2

Java Dance Theatre Mask, *Topeng*, 19th century, wood face mask with upturned nose, with two holes for attached cord, (age crack to jaw), 7 x 5 1/2 in.
\$700-900

3

Batak Wood Panel, Sumatra, Indonesia, a panel from a house, featuring a stylized lion head, *Singha*, carved in relief, (minor loss at top), 26 x 12 3/4 in.
\$1,200-1,800

4

Batak Wood Panel, Sumatra, Indonesia, a panel from a house, featuring a stylized lion head, *Singha*, carved in high relief, 26 x 15 in.
\$1,200-1,800

5

Indonesian Ancestor Figure, Flores Island, elongated torso without arms, simple face and topknot on crown, weathered surface, with metal stand, ht. 26 in.
\$2,000-3,000

6

Dayak *Tun Tun* Stick, West Kalimantan, Borneo, Indonesia, seated figure with elbows on its knees, white glass beads in eyes, (loss to the headgear), lg. 21 in.
\$800-1,200

7

Dayak *Tun Tun* Stick, West Kalimantan, Borneo, Indonesia, seated figure with elbows on its knees, eroded surface, lg. 21 1/2 in.
\$800-1,200

8

Dayak *Tun Tun* Stick, West Kalimantan, Borneo, Indonesia, seated figure with elbows on its knees, lg. 17 3/4 in.
\$700-900

9

Dayak *Tun Tun* Stick, West Kalimantan, Borneo, Indonesia, seated figure holding a small monkey between its knees, (minor loss), lg. 13 1/2 in.
\$700-900

10

Timor Mask, early 20th century, large wood mask with cut out eyes and mouth, two holes pierced for wearing, ht. 11 1/2, wd. 10 in.
\$1,000-1,500

11

Philippine War Shield, Bagobo, southeastern Mindanao, late 19th century, cut from one piece of wood, with hair tufts still remaining around the edges, traces of pigments, and hand grip cutout at rear, (surface abrasions), ht. 58 1/2, wd. 16 1/2 in.
\$400-600

12

Philippine War Shield, Bontoc, Igorot, northern Luzon, early 20th century, carved from one piece of wood, with rattan bindings and central cutout at the back for the handle, ht. 37 3/4, wd. 12 1/2 in.
\$400-600

13

Philippines War Shield, Bagobo, southeastern Mindanao, 19th century, with raised central boss, the outer edges bordered with hair tufts, incised and painted design on the front, with a raised carved handle at back, old paper label, lg. 37 3/4, wd. 14 1/2 in.
\$700-900

14

Philippines Carved Wood Spoon, Ifugao, northern Luzon, early 20th century, with a female human figure for handle, lg. 6 in.
\$200-400

15

Philippine Carved Wood Spoon, Ifugao, northern Luzon, late 19th century, the handle in the form of a female figure, dark rich patina, lg. 7 in.
\$700-900

16

Philippine Carved Wood Spoon, Ifugao, northern Luzon, late 19th century, the handle in the form of a female figure, dark rich patina, lg. 6 1/4 in.
\$400-600

7
detail9
detail

15



18



31

17
Geelvink Bay Shield, early 20th century, subtle hourglass shape, the front carved with typical curvilinear designs, handle at back, on metal stand, ht. 26 in.

Provenance: Sotheby's London, December 7, 1992, Lot 5; Peter Hallinan Collection.

\$2,000-3,000

18
Korwar Figure, Irian Jaya, late 19th century, the figure sitting on a round base, knees and hands resting on a blank shield, the oversized head with protruding mouth and long exaggerated nose, small eyes and a top-knot on crown, ht. 8 1/2 in.

Literature: *Borneo and Beyond. Tribal Arts of Indonesia, East Malaysia and Madagascar*, 1990, p. 32.

Exhibitions: *Ethnic Art Exhibition in Oceania*, Musashino Art University, Japan, May 14 to June 4, 1994.

\$4,000-6,000

19
Korwar Canoe Prow Ornament, Cenderawasih Bay, Irian Jaya, Indonesia, 20th century, repeated cutout design with abstract figure atop, (losses), lg. 29 in.
\$500-700

20
Massim Lime Spatula, Trobriand Islands, Papua New Guinea, late 19th/early 20th century, the handle decorated with lime filled curvilinear designs, smooth black patina, lg. 11 3/4 in.

Provenance: Beasley Collection, United Kingdom, number 1776.

\$800-1,200

21
Massim Lime Spatula, Trobriand Islands, Papua New Guinea, early 20th century, a large crouching figure atop the blade, smooth dark patina, lg. 12 3/4 in.
\$500-700

22
Massim Lime Spatula and Sword Club, Trobriand Islands, Papua New Guinea, long lime spatula decorated with eight crouching figures, enhanced with lime, with a short sword club, lg. 25 1/4 and 16 1/2 in.
\$500-700

23
Two Wood Massim Food Bowls, Trobriand Islands, Papua New Guinea, early 20th century, each decorated with ornately carved rims, (the lower bowl with a repaired crack), dia. 13 and 12 1/2 in.
\$300-500

24
Two New Guinea Woven Bags, Sepik River, woven with bush fiber and decorated with boar tusks, shells, and cassowary feathers, lg. 9 and 12 in.

Provenance: R.H. Pulliense Collection, Australia.

\$300-500

25

Seven New Guinea Jewelry Items, a woven necklace with nassa shells, a neck ornament with bone and seeds, a neck ornament with four boar tusks and shells, two double boar tusk neck ornaments, a double boar tusk armband, and a woven nassa shell armband, wd. 8 1/2, 2, 6 1/2, 6 1/2, 7, 4 1/2, and 6 in.

Provenance: B.L. Hornshaw Collection, Australia.

\$400-600

26

New Guinea Shell Necklace, Northeast Coast, eleven large shells connected on a woven rattan ring, decorated with cowrie shells, dia. 11 1/2 in.

\$200-400

27

Two New Guinea Bone Daggers, Maprik, early to mid-20th century, decorated with typical abstract designs, smooth glossy patina, lg. 14 and 11 1/2 in.

Provenance: B.L. Hornshaw Collection.

\$400-600

28

Three New Guinea Bone Daggers, Maprik, early to mid-20th century, each decorated with typical abstract designs, pierced at the top for fiber decorations, smooth glossy patina, lg. 14 1/2, 11 1/2, and 11 1/4 in.

Provenance: B.L. Hornshaw Collection.

\$500-700

29

New Guinea Stone Head Club, Highlands, early 20th century, thin shaft with pointed butt end, plaited fiber and small stone disk head, lg. 41 in.

\$400-600

30

Huon Gulf Food Bowl, Papua New Guinea, early 20th century, decorated with abstract carving on the exterior, (cracks and minor repairs to side), 14 x 6 in.

\$500-700

31

Papua New Guinea Ancestor Figure, Huon Gulf, c. first quarter 20th century, standing on a round base, with straight legs and cutout arms, torso leaning to the right, with simplified abstracted face, mouth open and raised coiffure, (loss to ears), ht. 14 1/4 in.

\$2,000-3,000

32

New Guinea Charm, Marupai, Papuan Gulf, first quarter 20th century, carved coconut with traces of pigments, with typical geometric carving on the one side, lg. 5 1/4 in.

\$300-500

33

New Guinea Wood and Polychrome Figure, Papuan Gulf, figure with arms raised, decorated with low relief abstract designs enhanced with pigments, (left leg missing), lg. 25 in.

\$800-1,200

34

Painted Wood Board, Gope, Elema, Papuan Gulf, Papua New Guinea, early to mid-20th century, an abstract figure decorated in high relief in the typical Papuan Gulf style, with white, black, and orange/brown pigments, lg. 44, wd. 9 in.

\$800-1,200

35

New Guinea Canoe Stanchion, Dampier Straits, Tuam Island, elongated form, the domed base supporting an oblong pierced shaft ended by a circular motif, all surmounted by a crescent-shaped terminal and decorated with an incised curvilinear design, with metal stand, ht. 43 in.

Provenance: Sotheby's London, December 7, 1992, Lot 99; Peter Hallinan Collection.

\$1,500-2,000

36

Simbai River Shield, Papua New Guinea, Karam group, early 20th century, hardwood, decorated with a centrally raised and carved foliate design, with bush fiber carrying strap, metal stand, 37 x 18 1/8 in.

Exhibitions: *Ethnic Art Exhibition in Oceania*, Musashino Art University, Japan, May 14 to June 4, 1994, number 14.

\$3,000-5,000

37

Papua New Guinea War Shield, latmul, Middle Sepik River, mid-20th century, cut from one piece of wood, the front decorated with the abstracted face, swirling lines and serrated edges typical of the region, the rear with a raised arm mount, ht. 64 3/4, wd. 13 1/2 in.

\$800-1,200

38

Papua New Guinea Mask, Mei, latmul, Middle Sepik River, mid-20th century, the long mask with protruding ears and nose, the face painted in a three color abstract pattern, pierced at the top for attachment to a costume, (missing most of the nassa shells and clay surface), lg. 32, wd. 9 in.

\$2,000-3,000

39

New Guinea Head Fragment, Karawari, Middle Sepik River Province, the head fragment from a larger figure, with traces of pigments, mounted on a wood base, ht. 19 1/4 in.

\$800-1,200

40

Two Painted New Guinea Rondel Ornaments, Middle Sepik River Province, made from balsa wood, with fiber attachments in the center, (some loss around the edges), dia. 8 1/2 and 8 in.

\$300-500

41

New Guinea Cult Carving, Hunstein Mountains, curved board with four protruding hooks and central square protrusion, with pigments, lg. 28 in.

\$700-900

42

New Guinea Stone Club Head, late 19th/early 20th century, basalt disk club head, (minor chips to edge), dia. 4 7/8 in.

\$300-500

43

New Guinea Stone Adze Blade, possibly 19th century, with carved human face on one side, lg. 8 1/2 in.

\$500-700

46



44

Large New Guinea Conch Shell Trumpet, Schouten Island, early to mid-20th century, pierced at the bottom for fiber decoration, with smooth blackened patina, with metal stand, (minor loss at the end), ht. 12 3/4 in.

Provenance: Michael Hamson, Palos Verdes Estates, California.

\$700-900

45

Abalam Yam Mask, Maprik, Papua New Guinea, early to mid-20th century, flat front mask with hair and beard treatment, traces of pigments, ht. 10 1/2, wd. 6 in.

\$300-500

46

St. Matthias Island Comb, Papua New Guinea, late 19th century, made from coconut midribs and plaited together with bush fiber, painted in lime, (tines missing), lg. 26 1/2 in.

\$3,000-4,000

47

New Britain Hardwood War Club, Gazelle Peninsula, 19th century, double cone butt end with long tapered shaft terminating in pointed cone, old label reads "New Britain Club," smooth dark patina, with metal stand, lg. 51 in.

\$1,500-2,000

48

Vanuatu Dance Stave Head, Teme, Malekula Island, early to mid-20th century, made with wood, boar tusks, bark cloth, spider web, natural pigments, rattan, banana fiber and modeled clay, with metal stand, ht. 15 1/4 in.

\$800-1,200

49

Vanuatu Hardwood War Club, Malekula Island, 19th century, paddle style with long thick shaft terminating in a pointed cone, smooth dark patina, lg. 51 1/2 in.

\$1,200-1,800

50

Vanuatu Hardwood War Club, Malekula Island, 19th century, the head with four carved balls and a mushroom-shaped head, smooth dark patina, (insect damage on butt), lg. 33 in.

\$600-800

51

Vanuatu War Club, Ambrym Island, 19th century, long shaft with bulbous butt end and cutout paddle-shaped head, glossy dark patina, lg. 32 in.

\$800-1,200

52

Collection of Solomon Islands Jewelry, New Georgia, six clamshell armbands, two nose ornaments, and a woven hair necklace with shell disks, mounted on card, size of mount 11 x 7 1/2 in.

\$300-500

53

Solomon Islands Bow, Bougainville, late 19th/early 20th century, fully wrapped in a woven colored orchid fiber sheath, (minor loss), lg. 67 1/2 in.

\$400-500

54

Santa Cruz Dance Club, Napa, Solomon Islands, 19th century, canoe-shaped club with black pigment decoration and fiber tassels, (some tassel lugs are missing, chips and age cracks), old Christie's auction label, lg. 35 in.

Provenance: Christie's London, March 20, 1979, Lot 192.

\$500-700

55

Three Solomon Island Walking Sticks, early 20th century, decorated with inlaid mother-of-pearl shell, held in place with mastic paste, lg. 40, 38, and 36 1/2 in.

\$300-500

56

Eastern Solomon Islands Parrying Shield, Qauata, 19th century, with a crescent blade and medial ridge terminating in a "W" symbol, representing frigate birds, with a knopped tapering shaft, lg. 37 1/2 in.

\$800-1,200



61

57
Solomon Islands Hardwood War Club, Alafolo, Malaita, late 19th century, long straight-sided club terminating in an abstract human head, lg. 41 in.
\$500-700

58
Solomon Islands War Club, Malaita, 19th century, dark tapered hardwood form with a crescent at the butt end, smooth dark patina, (minor age crack), lg. 27 in.
\$500-700

59
Solomon Islands Hardwood War Club, Kila, Malaita, 19th century, long straight-sided shaft with central raised ridgeline on the blade, with traces of fiber wrapping, lg. 51 1/2 in.
\$400-600



66

60
Solomon Islands Parrying Shield, Qauata, Malaita, 19th century, long narrow haft with crescent blade, with central raised ridge, (loss to butt end), lg. 43 in.
\$600-800

61
Solomon Islands Scepter, South Malaita, 19th century, cylindrical form with a waisted butt and inlaid with mother-of-pearl and supporting a slender wood shaft terminating in a heavily encrusted ball inset with mother-of-pearl in a star pattern, lg. 19 in.

Provenance: Sotheby's New York, November 21, 1996, Lot 10.
\$2,000-3,000

62
Solomon Islands God Stick, Malaita, 19th century, crouching figure atop a short spike, varnished patina, ht. 13 in.

Provenance: Private collection, Santa Fe, New Mexico; Boddham Welham, Geneva; Duperrier, Paris, France.
\$800-1,200

63
Solomon Islands Fish Float and Hook, Malaita, early to mid-20th century, wood carved flying fish god figure with stone sinker attached with rattan, (broken at legs and repaired), lg. 22 1/2 in.

Provenance: David Akin Collection, with a Sotheby's label attached, sale name ETRI.
\$800-1,200

64
Solomon Islands Paddle Club, San Cristobal, 19th century, paddle type with central raised ridgeline on the blade and pointed butt end, smooth black patina, lg. 44 1/2 in.
\$400-600

65
Rennell Island Walking Stick, Solomon Islands, early 20th century, decorated with finely carved designs filled with lime pigment, lg. 35 in.
\$400-600

66
Rennell Island Club, Baukiana, Bellona Island, Solomon Islands, late 19th, early 20th century, hardwood and sennit fiber, the strapped head carved into eight blunt points, lg. 17 in.

Provenance: Christie's London, Lot 166.
\$3,000-4,000



70



81

67

Kanak Hardwood War Club, New Caledonia, late 19th century, mushroom head type with thick shaft and defined handle, (chips to rim of the head, age crack), lg. 25 1/2 in.
\$700-900

68

Kanak Hardwood Tapa Beater, New Caledonia, 19th century, long cylindrical beater with fully cross-hatched cut above the handle, lg. 16 1/2 in.
\$500-700

69

Kanak Bird-head War Club, New Caledonia, 19th century, long shaft with defined handle, typical bird head and long beak, with metal stand, (loss to head), lg. 28 in.
\$700-900

70

Kanak Bird-head Club, New Caledonia, 19th century, small bird-head type, smooth dark patina, (chips and loss to the head), lg. 32 in.
\$1,000-1,500

71

Kanak Bird-head War Club, New Caledonia, 19th century, long narrow shaft, defined grip, and a long thin bird beak at head, (minor loss to beak), lg. 32 in.
\$800-1,200

72

Kanak Bird-head Club, New Caledonia, 19th century, hardwood club with defined handle grip and pointed beak head, lg. 23 3/4 in.
\$1,000-1,500

73

Australian Aborigine Shell Ornament, *Lonka Lonka*, early 20th century, pearl shell with pigmented linear design on the front, still with some of the hair belt attached, (broken and restored), lg. 7, wd. 4 3/4 in.
\$800-1,200

74

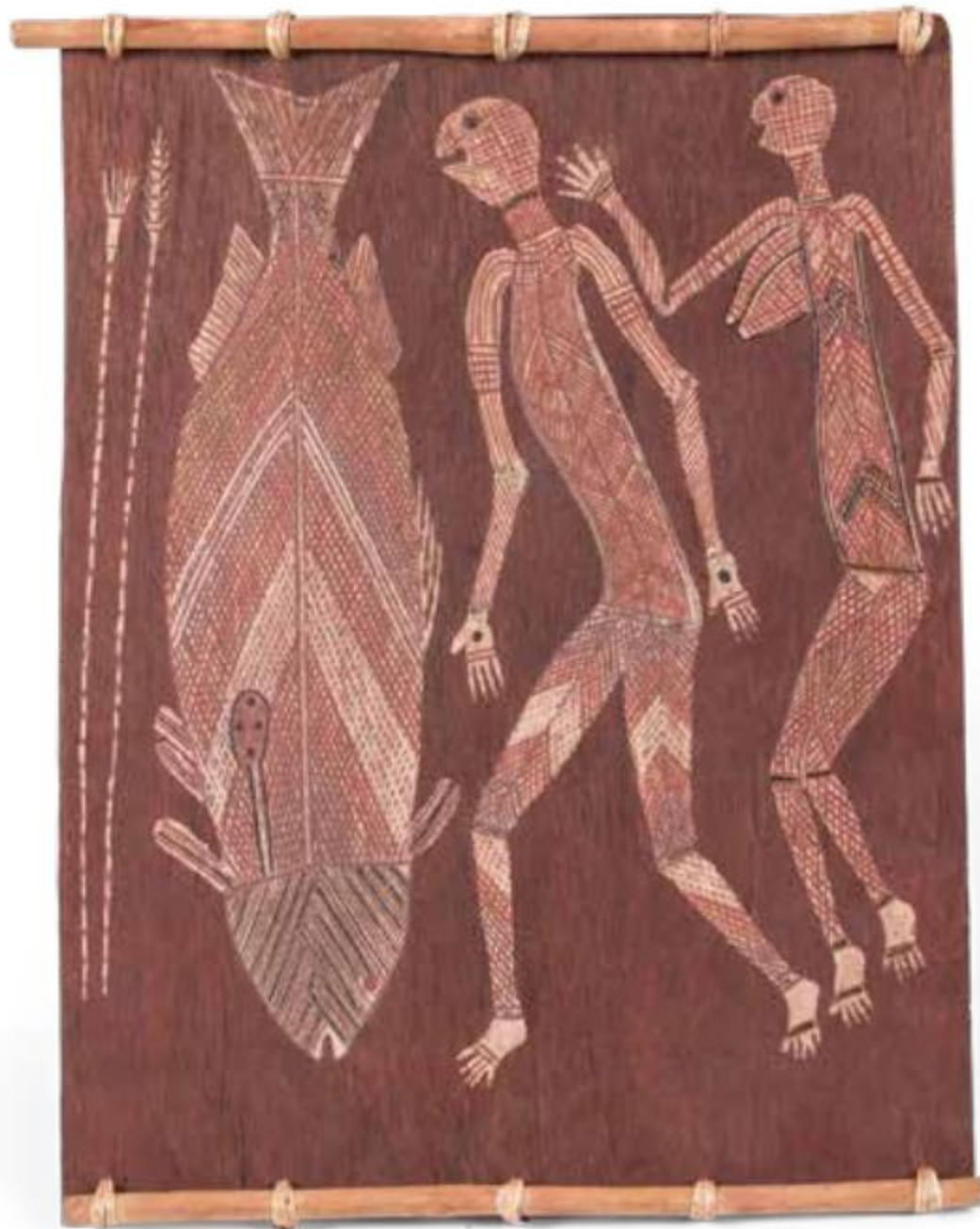
Australian Aboriginal Parrying Shield, c. 1920s, Western Desert, decorated on both sides with deeply incised lines, filled with pigment, 27 x 5 in.
\$800-1,200

75

Australian Aboriginal Bark Painting, Northern Arnhem Land, N.T., Echidna or Porcupine, in X-ray style, painted on eucalyptus bark, by Nguleingulei from Oenpelli, in conjunction with the Church Missionary Society Mission, with label on the back, 15 1/2 x 17 in.
\$400-600

76

Australian Aboriginal Bark Painting, Northern Arnhem Land, N.T., "Mimi man and woman of the early dreamtime, with Barramundi captured with spears," in X-ray style, painted on eucalyptus bark, by Mangudja, in conjunction with the Church Missionary Society Mission, with label on the back, 16 x 12 in.
\$400-600



76



79

77

Australian Aboriginal Bark Painting, c. 1970s, natural pigments on eucalyptus bark, human figure with arms raised, surrounded by insects and three abstract forms, 37 x 25 in.
\$300-500

78

Australian Aborigine Churinga, Western Desert, late 19th century, decorated with finely incised linear designs, 20 x 2 3/4 in.
\$800-1,200

79

Australian Aborigine Stone Churinga, Central Desert, late 19th century, pigmented with natural ochres and decorated on both sides with deeply incised totemic designs, (old chip at lower edge) lg. 8 1/2, wd. 4 1/4 in.
\$1,200-1,800

80

Aboriginal Spear Thrower, Woomera, Western Desert, early 20th century, incised carving on the front, with adze marks on the back, resin ball at the handle end, wood peg attached with fiber at the top, old label verso, lg. 27 1/4 in.
\$500-700

81

Fijian Hardwood Throwing Club, Ula, early 19th century, decorated with many cutout dots at base of the head, worn *tavatava* grip with one small wrist strap hole, dark smooth patina, lg. 16 in.
\$800-1,200

82

Fijian War Club, Kinikini, 19th century, hardwood, the thick shaft supporting a long and broad flat blade highly decorated with fine incised designs, black slightly sticky surface, (small chip to one end of blade), lg. 43, wd. 12 in.
\$2,000-3,000

83

Fijian Hardwood Throwing Club, Ula, early 19th century, with a worn *tavatava* carved grip, with old inventory label, (minor loss to head), lg. 17 in.
\$800-1,200

84

Two Fijian Hardwood Throwing Clubs, Ula, early 19th century, each with *tavatava* carved grip and a hole at the butt for wrist strap, each with a rich dark patina, lg. 18 and 16 1/2 in.
\$700-900

85

Two Fijian Hardwood Throwing Clubs, Ula, early 19th century, two lobed clubs, each with *tavatava* carved grip and one with a hole at the butt for wrist strap, lg. 16 1/2 and 16 in.
\$700-900



88

93



94

86

Three Fijian Dance Clubs, *Kiakavo*, 19th century, one with sennit-wrapped shaft with two heads, (one missing), the second with plaited banana fiber-wrapped shaft, and the third plain, lg. 39, 36 1/2, and 32 in.

\$300-500

87

Fijian Rootstock Club, late 19th century, long thin shaft with incised hand grip, dry patina, (age cracks), lg. 43 in.

\$200-400

88

Fijian Hardwood Dance Club, *Gugu*, early/mid 19th century, the leaf shaped head un-decorated with carving, dark, smooth patina, (crack in shaft and hole at butt end), lg. 35 in.

\$2,000-3,000

89

Fijian Hardwood Paddle Club, *Culacula*, 19th century, broad flat club with two slightly protruding arms, with unfinished incised design, pierced lug at butt for a hand strap, with metal stand, (both arms missing), lg. 44 in.

\$1,000-1,500

90

Fijian Hardwood War Club, *Totokia*, 19th century, shaft decorated with *tavatava* carving for handle grip, the head terminating in a point surrounded by small nubs, with metal stand, smooth dark patina, (some loss to head and butt), lg. 38 in.

\$1,000-1,500

91

Fijian Hardwood Dance Club, *Kiakavo*, 19th century, thick shaft, bulbous butt end with traces of sennit wrapping, terminating in spur at top, with metal stand, lg. 37 in.

\$700-900

92
Fijian Hardwood Dance Club, *Gata*, late 19th century, shaft wrapped with sennit fiber, dark patina, lg. 34 in.
\$700-900

93
Fijian Hardwood War Club, *Gata*, early 19th century, thick and heavy shaft with a carved spur at the top and ribbed end, smooth rich patina, lg. 39 in.
\$1,000-1,500

94
Fijian Rootstock Club, *Vunikau*, 19th century, ironwood, with *tavatava* carved grip and rootstock head with inlay, dark varnished patina, lg. 43 in.
\$2,000-3,000

95
Fijian Rootstock Club, 19th century, hardwood, worn *tavatava* handle, the head with protruding nubs, with metal stand, (age cracks), lg. 38 in.
\$700-900

96
Fijian Hardwood War Club, *Culacula*, 19th century, paddle-shaped head with raised central cross ridge, serrated sides, and bulbous butt end, lg. 40 1/2 in.
\$700-900

97
Fijian Kava Bowl, hardwood, in the form of a turtle standing on all fours, lg. 23, wd. 16 in.
\$400-600

98
Fijian Whale Tooth Pendant, *Tabua*, mid-19th century, pierced twice for suspension, with unattached sennit fiber cord, (chips to one end), lg. of tooth 5 in.
\$500-700

99
Easter Island Figure, *Mo'ai Kavakava*, hardwood, a standing, slightly stooped male figure with emaciated body, overall dark brown patina, ht. 14 in.
\$3,000-5,000

100
Samoan War Club, 19th century, with incised geometric designs on the upper part of blade, dark, dry patina, lg. 41 1/2 in.
\$500-700

101
Samoan Hardwood War Club, late 19th century, long shaft with raised triangular sides, terminating in an larger crescent form, incised all over with complex geometric designs, smooth black patina, lg. 48 in.
\$700-900

102
Samoan Tapa Cloth, early 20th century, painted free-hand using a number of colors, (paint loss), 87 x 136 in.
\$400-600



99



103



106

103

Cook Islands Ceremonial Hafted Adze, Mangaia, 19th century, the hollow-carved square shaft with geometric relief carving, the basalt blade bound with sennit fiber, (minor wood loss), lg. 29 in.
\$1,000-1,500

106

Tongan Neck Rest, 19th century, hardwood, the curved pillow with central raised jagged cut ridge on the bottom, supported by two carved legs attached with nails, dry brown patina, ht. 5 1/4, wd. 17 in.
\$1,000-1,500

109

Maori Taiaha Head, New Zealand, early 20th century, carved on one side with the stylized protruding tongue with finely carved scroll design, a hole at the base, dark patina, lg. 8 in.
\$400-600

104

Tongan War Club, 19th century, short shaft with hole for wrist strap, with four-sided long blade terminating in a low pyramid top, dark brown patina, with metal stand, lg. 37 in.
\$700-900

107

Austral Islands Carved Wood Paddle, early to mid-19th century, overall carved geometric designs, the top with eight stylized heads, (one head missing and other minor loss, part of paddle missing), lg. 37 in.
\$1,000-1,500

110

Maori Carved Wood Fighting Staff, Taiaha, New Zealand, 19th century, the long shaft with Janus-head finial, the stylized protruding tongue with finely carved scroll design, with shell inlay in eyes, dark varnished patina, lg. 78 in.
\$2,000-3,000

105

Tongan Hardwood War Club, Akau, 19th century, ironwood with long shaft terminating in a flat, flared head with flat end, raised central ridge and three sets of serrated projections either side, lg. 49 in.
\$800-1,200

108

Austral Islands Ceremonial Paddle, mid-19th century, overall carved geometric designs, the top with eight stylized heads, round-cut shaft, dark patina, lg. 43 in.

Provenance: Christie's London, December 1, 1993, Lot 191.

\$2,000-3,000



108



112

111

Maori Wood Hand Club, *Patuki*, New Zealand, 19th century, the flat four sides decorated with carved *koru* patterns, the butt end with two faces, and pierced for wrist strap, the holes with shell surrounds, (age cracks), lg. 19 3/4 in.

Provenance: Christie's, London, October 13 1992, lot 306.

\$2,500-3,500

112

Maori Stone Club, *Patu Onewa*, New Zealand, 19th century, greywacke, polished stone with biconical hole and ridged butt, lg. 12 1/4 in.

Provenance: Merton Simpson Gallery, New York City.

\$2,000-3,000



110

113



113

Maori Wood Net Float, New Zealand, 19th century, pierced and carved as a figure with hands grasping chin, the in-turned feet forming loops, brown smooth patina, lg. 12 1/2 in.

Provenance: Christie's London, June 21, 1977, Lot 127; The James Hooper Collection, Arundel, Sussex, United Kingdom.

Literature: Steven Hooper, *Art and Artifacts of the Pacific, Africa and the Americas: The James Hooper Collection*, 1976, number 34, p. 45.

\$2,500-3,500

114
with detail



114

Maori Marionette Figure, Keretao, New Zealand, early to mid-19th century, the figure standing on a long wood point, fully carved with *koru* designs, the separately worked arms missing, the oval head with shell teeth and carved *moko* on forehead, paper labels on back, lg. 15 3/4 in.

Provenance: Sotheby's London, October 27, 1980, Lot 61; Beasley Collection, number 2731.

\$8,000-12,000

115

Hawaiian Game Stone, Ulumaika, probably pre-contact period, basalt, one side excavated, possibly to be used for medicine preparation, dia. 3 in.

\$800-1,200

116

Three Hawaiian Game Stones, pre-contact period, the largest made from coral, with metal stand, dia. 4, 2 3/4, and 2 in.

\$800-1,200

117

Two Hawaiian Stone Fishing Sinkers, pre-contact period, bread loaf shape, with metal stand, ht. 3 and 1 3/4 in.

\$300-500

118

Large Hawaiian Stone Octopus Lure Sinker, pre-contact period, flat back with central groove, with a metal stand, lg. 4, wd. 2 1/2 in.

\$300-500



127

119
Two Hawaiian Stone Octopus Lure Sinkers, pre-contact period, flat back with central cut-out groove to hold sennit attachment, with metal stand, ht. 3 3/4 and 2 3/4 in.
\$400-600

120
Hawaiian Stone Ring Poi Pounder, Kauai, pre-contact period, basalt stone, the handle shaped as a ring, with metal stand, ht. 5 1/8, wd. 6 in.
\$1,200-1,800

121
Large Hawaiian Poi Pounder, pre-contact period, basalt, with metal stand, (some minor chips), ht. 7 in.
\$500-700

122
Small Hawaiian Poi Pounder, pre-contact period, basalt, with a metal stand, ht. 5 1/4 in.
\$400-600

123
Two Hawaiian Stone Mortars, pre-contact period, two small round stone mortars, with metal stands, dia. 3 and 2 3/4 in.
\$600-800

124
Hawaiian Stone Poi Pounder, pre-contact period, basalt, cone shape, with metal stand, ht. 5 1/8 in.
\$400-600

125
Large Hawaiian Stone Stirrup Pounder, pre-contact period, basalt, square shaped with hollowed out side and two points on the top, with metal stand, ht. 5, wd. 4 3/4 in.
\$400-600

126
Large Hawaiian Grinding Stone, pre-contact period, large disk shaped volcanic stone, with surface debris from the ocean, with metal stand, dia. 4 3/4 in.
\$800-1,200

127
Hawaiian Poi Bowl, early to mid-19th century, Koa wood, wide low bowl, with a plug repair to one side, dark varnished patina, ht. 5 1/2, wd. 14 1/4 in.
\$2,000-3,000

128
Polynesian Carved Wood Poi Bowl, Hawaii, 19th century, calabash shape, probably *Milo* wood, (numerous surface cracks and repaired bottom), ht. 7 1/2, wd. 9 1/2 in.
\$800-1,200

129
Hawaiian Wood Poi Bowl, 19th century, the shallow rounded form, (a number of filled age cracks and a large replaced piece on the edge), dia. 11 in.
\$800-1,200

130
Hawaiian Gourd Bowl, 19th century, the bottom of a gourd, used as a food bowl, with native "kepa kepa" repair, with metal stand, dia. 6 in.
\$800-1,200



131

131

Hawaiian Tapa Cloth, Kapa, early 19th century, light brown with repeated bands of a colored stamped design, tapa beater pattern clearly evident in the cloth, old collection label "1870/389-1," 97 x 22 in.
\$500-700

132

Micronesian Shell Necklace, Caroline Islands, 19th century, large shell disk suspended from a coconut disk necklace strung with sennit, lg. 11 3/4 in.
\$300-400

133

Micronesian Coconut Shell Necklace, Caroline Islands, 19th century, small coconut shell disks constructed in a complex loop method strung with sennit, dia. 6 1/4 in.
\$400-600

134

Six Bone Naga Hairpins, Nagaland, early 20th century, decorated on one side with black pigmented fine incised designs, four with metal stands, lg. 9 1/2, 9 1/2, 9 1/8, 9, 8 1/2, and 8 in.
\$1,000-1,500

135

Nepalese Spring Figure, early 20th century, crouching wood figure with hands to chin, dry encrusted surface, with red wax customs stamp verso, ht. 13 in.
\$1,000-1,500

136

Nepalese Shaman Figure, early 20th century, standing wood female figure with hands raised in prayer, ht. 9 1/2 in.
\$800-1,200

137

Dogon Knife, the wood hilt carved as a seated female figure, with hand-forged decorated blade, lg. 12 1/2 in.

Provenance: Acquired in Mali in the 1980s.
\$400-600

138

Dogon Figure, Nommo, Mali, kneeling on a round base, the long arms raised above the head, heavily encrusted patina, ht. 16 1/4 in.

Provenance: Acquired in Mali in the 1980s.
\$800-1,200

139

Dogon Figure Female, standing on a low mound with hands resting on the lower abdomen, cut-out arms and elongated neck, with ruff at neck and elaborate coiffure, eroded surface, ht. 21 1/4 in.

Provenance: Collected at Dourou village, Wakara Northern Cliffs, 1980s.
\$800-1,200

140

Dogon Male Figure, Nyonga, Mali, seated on a triple circular base, the elongated torso accentuated by the narrow cut-out arms, with a beard and top-knot, dry dark encrusted patina, ht. 12 7/8 in.

Provenance: Acquired in Mali in the 1980s.
\$600-800

141

Dogon Kneeling Female Figure, kneeling female figure on a round base, hands on thighs, elongated torso and cut-out arms, pointed breasts and long neck, wearing a long plait on head, dry encrusted patina, ht. 15 in.

Provenance: Acquired in Mali in the 1980s.
\$800-1,200

142

Dogon Male Figure, standing on a low round base, short legs and elongated torso and cut-out arms, device on neck would indicate the figure of a prisoner, with a diamond motif on chest and defined crest coiffure, eroded surface, ht. 16 7/8 in.

Provenance: Acquired in Yaye village, Mali, in the 1980s.
\$800-1,200

143

Marka/Dogon Figurative Staff Finial, the legs cut below the knee, with an elongated torso and cut-out arms, hands on abdomen, the head with a high crested coiffure, in a wood base, ht. 11 7/8 in.

Provenance: Joshua Dimondstein, Los Angeles, California.
\$200-300

144

Dogon Mask, rectangular mask with three figures atop the head, small protruding mouth, long narrow nose and triangular cut-out eyes, eroded and dry patina, ht. 18 5/8 in.

Provenance: Acquired in Yaye village, Mali, in the 1980s.
\$1,500-2,500

145

Dogon Bronze Figure, early 20th century, man seated on a square platform, with metal stand, ht. 4 in.

Provenance: Jean-Michel Huguenin Galerie, Paris, France.
\$200-300

146

Kotoko Bronze Horse and Rider Amulet, Lake Chad, 19th century, bronze, ht. 1 1/2 in.

Provenance: Jo De Buck Gallery, Brussels, Belgium.
\$200-300

147

Small Dogon Door Lock, Mali, the square body with arms and pointed breasts, with narrow angular head above, dark patina, ht. 6 3/4 in.
\$300-500



149

148

Large Bamana Door Lock, Mali, in an abstract human form, with etched geometric pattern on the body of the lock and arm, dark, rich brown patina with white bloom, with metal wall mount, ht. 23 1/2 in.

Provenance: Noir d'Ivoire Galerie, Paris, France.
\$1,000-1,500

149

Bamana Storage Container, composed of two surmounting deep oval vessels, each supported by four angular struts on a domed foot and incised with bands of striated triangles, a four-legged animal forming the handle on the fitted lid, dark brown smooth patina, ht. 30 1/8 in.

Provenance: Private Collection, Massachusetts; Arthur Rothenberg Collection, New York City, New York; Katherine White Collection; Julius Carlebach, New York, 1949.
\$3,000-4,000



151

150

Senufo Horse and Rider, the figure with squat legs astride a horse, with an elongated torso and exaggerated arms holding the ears, the head with jutting mouth and long narrow nose, with scarification on the cheeks and coffee bean eyes, dark brown patina, ht. 20 in.
\$600-800

151

Senufo Standing Figure, standing on a circular base, the legs support an elongated torso, the cut-out arms slightly bent with hands on hips, arched shoulders beneath a heart-shaped face and high crested coiffure, overall dark patina, on a wood base, ht. 35 in.

Provenance: Pace Primitive, New York City, no. 54/3013B.
\$2,500-3,500



152

152

Senufo Mother and Child, seated on a four legged circular stood, the mother holding the small block-like infant to her flattened pointed breasts, her triangular head with grooved mouth and eyes and tri-pointed coiffure surmounted by a bird-like headdress, dark brown patina, on a metal base, ht. 21 1/4 in.

Provenance: Private collection, Massachusetts; Arthur Rothenberg Collection, New York City; Julius Carlebach, New York, 1948.

\$6,000-8,000

153

Punu Face Mask, Gabon, hollowed form, the flat oval-shaped face with raised pursed lips, flat nose and slit eyes beneath arched eyebrows, framed by raised scarification marks, wearing a traditional striated double-crested coiffure, traces of kaolin and pigments, (surface loss and repair to right back side), 10 x 6 1/4 in.

\$4,000-6,000



155

154

Bamun Head Crest, *Tungungu*, Cameroon, on a columnar neck, with a heavy protruding brow over a concave face with deep-set circular eyes, aquiline nose and pursed mouth over extended chin, with slightly flaring ears, black glossy patina, on a metal stand, ht. 18 3/4 in.

Provenance: Merton Simpson, New York City.
\$3,000-4,000

155

Zemle Antelope Mask, with gaping mouth, bared notched teeth, deeply-carved lozenge-shaped nostrils, flattened snout and grooved close-set brows, the forehead surmounted by a pair of backward curving horns with ribs in low relief black and red pigments, on a metal stand, ht. 24 in.

Provenance: Private collection, Massachusetts; Arthur Rothenberg Collection, New York City; Julius Carlebach, New York, 1947.
\$25,000-30,000

156

Dan Mask, hollowed-out oval form pierced around the rim, the full protruding downturned lips parted, triangular nose and small slit eyes and protruding forehead, overall black patina, with metal stand, ht. 9 1/2 in.

\$1,200-1,800

157

Dan Face Mask, Poro Society, hollowed-out oval form pierced around the rim, the full protruding triangular lips parted with kaolin pigment, the delicate nose framed by large circular eyes, and gently sloped forehead with a black line in the center, smooth brown patina, lg. 9 1/4, wd. 5 1/4 in.

Provenance: Mathias Komor, New York City.
\$1,500-2,000



157

158
Dan Mask, Ivory Coast, hollowed-out form with large round pierced eyes, wide nose, protruding lips, and projecting forehead, fiber traces on chin and head, pierced around the rim for attachments, lg. 10 1/2 in.
\$800-1,200

159
Baule Male Figure, standing on round base, (partially missing), with hands to the abdomen, scarified cheeks and back, with a ringed neck, ornately carved coiffure, dry dark patina, on a Plexiglas base, ht. 12 1/2 in.
\$1,200-1,500

160
Baule Female Figure, standing on square base, with slightly bent heavy legs, elongated torso, with hands to the abdomen, scarified back, abdomen, and neck, ornately carved coiffure, dry dark patina, mounted on wood base, ht. 17 3/4 in.
\$1,200-1,500



161

161
Baule Female Figure, standing on fragmentary feet, heavy legs leading to rounded buttocks and a robust torso, the finely carved hands touching the breasts beneath an elongated neck with round face and closed mouth, and wearing an intricately carved coiffure, dark brown patina, (age cracks), ht. 11 in.

Provenance: Sotheby's New York, November 22, 1998, Lot 260.
\$2,000-3,000

162
Mossi Standing Male Figure, Burkina Faso, standing on long legs, with straight arms at sides, flat shoulders below an elongated neck and oval face, scarification marks on the protruding abdomen, with a black encrusted patina, ht. 36 1/2 in.

Provenance: Philippe Dodier, Avranches, France.
\$1,200-1,800



162

163
Mossi Standing Woman, Burkina Faso, standing with legs apart, the elongated torso and very long arms, outstretched, the long round neck supporting an oval head with long pointed nose and round eyes, with a dark encrusted patina, on a metal base, ht. 34 in.
\$800-1,200

164
Fon Legba Terra-cotta Figurative Pair, Togo/Benin, two bearded figures seated on a circular base, with arms on knees and wearing large headdresses, ht. 11 in.

Provenance: Amyas Naegele, New York City.
\$1,000-1,500

173



165

Lobi Ritual Terra-cotta Vessel, the hollowed spherical form decorated overall with concentric rows of raised spikes, with a small fitted lid at the top with an animal as handle, with a small figure on one side of the vessel, varied and encrusted surface, ht. 19, wd. 15 1/2 in.

Provenance: Amyas Naegele, New York City.

\$800-1,200

166

Bwa Buffalo Mask, Nao, Burkina Faso, the triangular snout open, the snout top and face carved and pigmented in bold black, red and white pigments, with white pointed ears and crescent horns, pierced around the edge for attachments, lg. 22 in.

Provenance: Laurent Dodier, Avranches, France; Jean Lecannellier, France.

\$800-1,200

167

Two Bronze Lobi Figures, Burkina Faso, bronze seated figures, each on base, ht. 3 and 2 1/2 in.

Provenance: Stella Loebarth, Paris, France.

\$200-300



178

168

Standing Male Lobi Figure, with heavy feet and legs, protruding abdomen, arms at sides and thick neck beneath an angular head with protruding mouth, eyes, and ears, encrusted patina, ht. 14 1/2 in.

\$300-500

169

Gurunsi Female Figure, Burkina Faso, standing on long bent legs with swollen abdomen and pendulant breasts, head with open jutting mouth and long nose, ht. 14 in.

Provenance: Amyas Naegele, New York City.

\$400-600

170

Pair of Lobi Figures, two standing male figures, with a black encrusted patina, on a wood base, ht. 9 in. each.

Provenance: Galerie Aethiopia, Paris, France.

\$700-900

171

Lobi Female Figure, the heavy angular body and head with an overall brown patina, on a wood base, (minor insect damage), ht. 9 in.

\$200-300

172

Tiv Male Figure, the heavy legs supporting wide hips and narrow waist, the short arms holding the abdomen, the thick neck supports a flat abstracted head, on a metal base, ht. 13 3/4 in.

Provenance: Martial Bronsin, Brussels, Belgium.

\$800-1,200

173

Yoruba Bronze Staff Finial, kneeling female figure in bronze, cut from a staff, hands holding the breasts, elongated neck and exaggerated mouth, with bulging eyes and double-crested coiffure, smooth patina, with metal stand, ht. 7 1/4 in.

\$600-800

174

Yoruba Bronze Edan Rod, Ogboni, head on a long rod, with protruding chin, wide flat nose and bulging eyes, wearing a peaked hat, smooth dark patina, mounted on base, lg. 12 in.

\$1,200-1,800

175

Yoruba Kola Nut Container, the heavy oval bottom with decorated rim, resting under a ornately carved lid with central raised ridge and circular handle, dark brown patina, ht. 9, wd. 14 1/2 in.

\$700-900



179



183

176

Yoruba Gelede Helmet Mask, hollowed-out hemispherical form pierced on the rim, elongated face with protruding mouth and nose, coffee-bean pierced eyes with heavy lids, high protruding forehead under an animal in combat with a snake, glossy black patina, lg. 9 3/4, wd. 7 3/4, ht. 10 in.

Provenance: Collection of Joseph Aurelian Cornet.

\$2,000-3,000

177

Yoruba Helmet Mask, hollowed-out hemispherical form pierced on the rim, the heart-shaped face with small mouth and nose and protruding eyes with heavy lids, scarification on the face, with a black three-piece coiffure under two birds holding a round lidded vessel with two human heads, traces of paint, ht. 16 3/4 in.

Provenance: Collection of Joseph Aurelian Cornet.

\$1,200-1,800

178

Igala Terra-cotta Pair, Benue, Nigeria, male and female sitting atop a circular base, the female with left arm on the male's shoulder, ht. 11 1/4 in.

Provenance: Dimondstein Tribal Arts, Los Angeles, California.

\$1,800-2,400

179

An Ekoi Headdress, Nigeria, the circular fiber platform supporting a seated figure with articulated limbs and oversized head with open mouth inset with metal teeth, raised scarification on the head, the whole encased in a dark brown leather, ht. 10 in.

Provenance: Sotheby's New York, May 6, 1998, Lot 325.

\$2,000-3,000

180

Lega Wood Male Figure, male torso, with most of the legs missing, the figure with an encrusted patina, with metal stand, ht. 16 in.

Provenance: Amyas Naegele, New York City.

\$300-500

181

Two Kuba Tukula Boxes, Congo, hollowed-out semicircle, the larger highly decorated on lid and rounded sides, the second crescent shape decorated with varied geometric motifs on the sides, 15 1/2 x 6 1/2 and 9 1/2 x 4 in.

\$300-400

182

Basonge Fetish Figure, Congo, with legs wrapped in hide, arms on abdomen with hands around the power charge, cylindrical neck below abstract flattened circular head, ht. 6 1/2 in.

\$500-700

183

Standing Bakongo Fetish Figure, Congo, a diminutive figure standing on a square base, with arms placed on the lower abdomen, below the "magic charge" hole, strong neck supports the raised head with glass eyes and raised coiffure, overall smooth dark brown patina, ht. 6 3/4 in.

Provenance: Purchased from Galerie Valluet, Paris, France, 1999.

\$1,200-1,800

184

Songye Power Figure, Congo, the legs wrapped in sacking, hands on abdomen, with a magic bundle in cloth bag around waist, elongated neck and angular head with defined coiffure, ht. 14 in.

\$800-1,200

185

African Wood Slit Drum, Batetela, Congo, early 20th century, with carrying strap and two drum beaters with natural rubber head, ht. 28, wd. 35 in.

\$800-1,200

186

Gourd Container with Witch Doctor's Medicine, Congo, early 20th century, large flat gourd with cutout attached lid, containing a witch doctor's supply, wd. 9 1/4, ht. 5 in.

\$500-700



187

187

Luba Caryatid Stool, the slightly concave circular seat supported by the heads and hands of a Janus male and female caryatid, each figure standing on the low domed base with exaggerated feet and short stocky legs set wide apart, their tapering oval faces each with protruding rectangular mouth open and teeth bared, flattened nose, pierced eyes (two blue glass bead inlays remaining), and low smooth forehead, the female with an incised coiffure, rich reddish-brown patina, ht. 12 in.

Provenance: Private collection, Massachusetts; Arthur Rothenberg Collection, New York City; Julius Carlebach, New York, 1946.

\$20,000-25,000

188

Bakota Reliquary Guardian Figure, the pierced diamond-shaped body beneath a cylindrical neck and oval convex face flanked by rounded flanges with pendant cylinders, and surmounted by a large crescent, the whole decorated with sheets of brass, ht. 27 in.

\$3,000-4,000

189

Chokwe Mask, *Mwana Pwo*, the face of a young woman, hollowed-out form, pierced around the rim, with open mouth baring teeth, slit coffee bean eyes above a long narrow nose, ears with earrings below and high square-cut coiffure, surface varnished, ht. 8 1/2 in.

Provenance: Herbert Baker Collection.

\$2,000-3,000

190

Wood Congo Bell, the round case with large pierced ring at top, partly wrapped in hide, with three wood clappers in openings at the base, on a custom stand, rich smooth worn patina, ht. 10 3/4, wd. 7 in.

\$800-1,000

191

Makonde Wood Bust, the bust of a man, the face with extensive facial tattoos in a linear design, with a protruding top lip, possibly due to a labret, heavy lidded eyes, naturalistic ears and blacked hair, smooth brown patina, ht. 10 1/2 in.

\$500-800

192

Pare Terra-cotta Figure, Tanzania, standing with legs far apart, arms on abdomen, with large nose and small eyes and mouth, ht. 6 in.

Provenance: Galerie Willem Zwiep, Amsterdam.

\$300-500

193

Liguru Standing Figure, Tanzania, the elongated figure with long narrow legs, arms at sides and an oval head with protruding mouth, nose and eyes, the surface heavily encrusted and flaking, on a wood base, (surface loss), ht. 24 1/4 in.

Provenance: Richard Meyer, New York City.

\$1,000-1,500



189



195

194

Pare Maternity Figure, Tanzania, the wood figure with legs and arms wrapped in leather, the long arms holding an infant on the back, dark encrusted patina, on a wood base, ht. 12 in.

Provenance: James Stephenson, New York City.

\$1,000-1,500

195

Quilted Cotton and Wool Mahdist Tunic, *Jibbah*, Sudan, c. 1880s, the white tunic decorated with colored patches of material was adopted by Sudanese Mahdist forces in the 1880s, the patches sewn on to the garment were reputed to represent poverty and humility, (minor damage), lg. 37, wd. 52 in.

\$4,000-6,000

196

Southern African Wood Neck Rest, Tsonga, 19th century, clover-leaf-shaped base rising in two open curves to outer square incised panels, which support the upturned pillow along with a central column and upturned crescent, rich dark patina, ht. 6 1/4 in.

Provenance: Bertram and Ruth Malenka collection, Belmont, Massachusetts.

\$3,000-5,000



196

200



197

Pair of Plains Beaded and Quilled Hide Moccasins, fourth quarter 19th century, with three lanes of white beads wrapping each moccasin, up the heel and across the top of the tongue, dyed quill crosses decorate the sides, quillwork covers the vamps, the tongue is comprised of quill-wrapped parfleche slats that terminate in feather-stuffed tin cones, lg. 10 in.

Provenance: Private collection, Long Island, New York; Estate of Thomas W. Lorimer.

\$800-1,200

198

Pair of Plains Beaded Hide Moccasins, late 19th century, with thick rawhide soles, soft hide sides, beaded tongues and multicolored beaded geometric designs, mostly in blue and green on white, lg. 10 3/4 in.

\$500-700

199

Pair of Northeast Beaded Cloth and Leather Child's Moccasins, late 19th century, velvet cuffs and beaded floral patterns, lg. 5 in.

\$200-300

200

Pair of Plains Fully Beaded Child's Moccasins, fourth quarter 19th century, complex geometric designs on a blue and orange background, the soles with green background, with high soft hide uppers, lg. 6 1/8 in.

\$500-700

201

Pair of Central Plains Beaded Hide Moccasins, fourth quarter 19th century, with bifurcated tongues, buffalo rawhide soles, and beaded with geometric designs on a blue background, lg. 10 in.

\$800-1,200

202

Single Plains Beaded Hide Moccasin, c. 1890, thick rawhide soles, plain hide cuffs, beaded with a combination of geometric designs and colored quillwork stripes, (stiff with holes in cuff), lg. 10 in.

\$200-400

203

Pair of Plains Beaded Hide Moccasins, Crow, fourth quarter 19th century, the soft-sole forms beaded on the vamps and along the sides, the sides with a light blue background, the fronts turquoise green with white borders, lg. 10 in.

\$2,000-3,000

201





204
Pair of Plains Beaded Moccasins,
 Cheyenne, fourth quarter 19th century, with
 rawhide soles and hide uppers, beaded with
 multicolored geometric designs on a white
 ground, lg. 9 1/4 in.
\$500-700

205
Eastern Plains Beaded Hide Moccasins,
 Dakota, c.1860s, the hard sole buffalo hide
 forms partially beaded with bilateral floral
 devices of multicolored small seed beads,
 remnant silk ankle trim, lg. 10 1/2 in.

Literature: *Eye of the Angel, Selections from
 the Derby Collection*, 1990, p. 77.
\$400-600

206
Pair of Northeast Beaded Hide Moccasins,
 fourth quarter 19th century, decorated vamps
 with multicolored beaded abstract designs, lg.
 10 1/4 in.
\$300-500

207
**Pair of Northeast Beaded Cloth and
 Leather Moccasins**, fourth quarter 19th
 century, with multicolored beaded abstract
 floral designs, lg. 9 3/4 in.
\$300-500

208
**Pair of Northern Plains Beaded Hide
 Moccasins**, fourth quarter 19th century,
 beaded with multicolored floral designs on
 blue background, with red trade cloth cuffs
 edged with black cloth, lg. 12 in.
\$1,000-1,500

209
**Rare Arapaho Plant Fiber-wrapped Awl
 Case**, c. mid-19th century, with red- and
 green-colored plant fiber, the hide suspensions
 with red-ochre decoration and dew claws,
 with custom stand, lg. 13 in.

Provenance: Brant Mackley Gallery, Santa Fe,
 New Mexico.
\$2,500-3,500



210
Plains Beaded Hide Umbilical Fetish, c.
 1900, in the form of a turtle, beaded on one
 side and tail with geometric designs and
 crossed American flags, hide underside, the
 legs large beads and tin cones, with two
 labels, one reads, "BBWest 1911", from
 Buffalo Bill's Wild West Show, lg. 6, wd. 3 1/2
 in.
\$300-400

211
**Plains Beaded Commercial Leather Strike-
 a-Lite Pouch**, fourth quarter 19th century, the
 front beaded with abstract stepped devices
 on a white ground, the top and bottom fringed
 with tin cone dangles, lg. 5, wd. 3 in.
\$1,800-2,400

212
Central Plains Beaded Hide Bag, late
 19th century, soft hide bag with multicolored
 beaded designs on both sides, and long
 multicolored beaded fringe, and hide
 drawstring handle, lg. including fringe 11 1/2
 in.
\$300-500



215

213

Small Plains Beaded Hide Pouch, fourth quarter 19th century, the front decorated with a stepped central design on a blue ground, with cone dangles and a drop on each bottom corner, lg. including drop 7 in.
\$500-700

214

Plains Beaded and Quilled Hide Pipe Bag, Sioux, fourth quarter 19th century, fully beaded to the top, mainly in green over white ground, with multicolored quilled rawhide slats and fringe from the bottom, lg. 33 1/2 in.
\$1,200-1,800

215

Central Plains Beaded Hide Pipe Bag, fourth quarter 19th century, soft hide bag with beaded panel on each side, one side above panel beaded, with beaded roll top, with quill wrapped fringe, with wood stick below, lg. with fringe 36 in.
\$4,000-6,000

216

Plains Beaded Hide and Quill Pipe Bag, Lakota, c. 1900, beaded at the top, the beaded panel with multicolored geometric designs on a white ground on both sides, multicolored quill-wrapped rawhide slats and hide fringe from the bottom, with custom-made wall mount, lg. 28 in.
\$1,500-2,000

217

Plains Beaded Hide Pipe Bag, fourth quarter 19th century, beaded at the top and sides, the beaded panel with multicolored geometric designs on a yellow ground on both sides, multicolored quill-wrapped rawhide slats and hide fringe from the bottom, (some quill loss), lg. 27 1/2 in.
\$800-1,200

218

Plains Beaded and Quilled Hide Pipe Bag, Sioux, c. late 19th century, with storm mountain beaded pattern on both sides, polychrome quilled rawhide slats and fringe from the bottom, lg. overall 29 in.

Provenance: Private collection, Long Island, New York.

\$1,000-1,500

219

Plains Beaded Hide Tobacco Bag, Lakota, western Sioux, c. 1880s, native tanned hide, roll beaded top with descending three row beaded edgework, the lower panel with geometric devices topped with a coup feather, teepee and cross devices, bead colors include faceted metallic, dark blue, white heart red, apple green, and cobalt blue on a white ground, the lowest panel of aniline-dyed quillwork with fringe, (stiffness to leather), lg. without fringe 21 in.

Provenance: Private collection, Long Island, New York; Skinner, March 14, 1992, Lot 189.
\$1,800-2,600

220

Plains Beaded Hide and Quill Pictorial Pipe Bag, fourth quarter 19th century, soft hide bag beaded with multicolored pictorial of a warrior on horseback on both sides of a wide panel, four beaded drops on each upper side, beaded roll top and narrow beaded strip on one side, multicolored quilled rawhide slats and fringe from the bottom, lg. with fringe 33 1/2 in.
\$6,000-8,000

221

Plains Beaded Hide Tobacco Bag, Eastern Sioux, 1890s, soft skin bag with red cloth edging, beaded foliate designs on both sides and long hide fringe, lg. 22 1/2 in.
\$800-1,200

222

Plains Hide Pipe Bag, with Pipe and Two Tampers, Blackfoot, fourth quarter 19th century, plain hide bag, with fringe together with blackstone pipe bowl, wood stem and two tampers, lg. of bag 15, lg. of pipe bowl 2 3/4, lg. of stem 14 in.
\$800-1,200

223

Southern Cheyenne Beaded Hide Pipe Bag, fourth quarter 19th century, soft hide bag painted with yellow pigments, the beaded panels with geometric and cross design on one side and geometric designs and buffalo heads, beaded sides and roll top, with long split tabs from the top and long hide fringe, (minor bead loss), lg. including fringe 34 in.
\$6,000-8,000



220



223



225



226

224

Plains Beaded Hide Possible Bag, Lakota, fourth quarter 19th century, beaded on the front, sides, and flap with multicolored geometric designs done in glass seed beads on blue background, tin cone and colored horsehair dangles, 14 x 22 1/4 in.
\$300-500

225

Plains Beaded Hide Possible Bag, Cheyenne, fourth quarter 19th century, beaded on the front, sides, and flap with multicolored geometric designs done in glass seed beads, tin cone and horsehair dangles, 12 x 22 in.
\$1,200-1,800

226

Pair of Plains Beaded Possible Bags, Sioux, late 19th century, the front, sides and flap bead decorated with the front a trio of diamond lozenges with cross motifs, tin cone with dyed horse hair tufts set as decorative accents, with metal wall mounts, each 13 x 21 1/2 in.

Literature: *Beauty Speaks for Us*, 2017, The Heard Museum, Phoenix, Arizona, p. 136.

Exhibitions: The Heard Museum, Phoenix, Arizona, February 10–April 2, 2017, *Beauty Speaks for Us*, the inaugural exhibition for the Virginia G. Piper Charitable Trust Grand Gallery.
\$3,000-5,000



232



234



236

227

Northern Plains Beaded Hide and Cloth Bag, mid-19th century, the hide pouch beaded on both sides with colorful floral designs, with a wide silk fabric fringe at the opening, 8 x 4 1/2 in.
\$500-700

231

Plains Beaded Hide Knife Sheath, Sioux, fourth quarter 19th century, beaded on one side in multicolored designs on white ground, with tin cone fringe at center and long bead and cone drop, lg. without drop 7 in.
\$500-700

234

Central Plains Beaded Hide Knife Sheath, fourth quarter 19th century, beaded on both sides with geometric designs on a blue ground, with knife, lg. 9 1/2 in.
\$5,000-7,000

228

Plains Beaded Hide Possible Bag, c. 1900, the front decorated with strip of red, blue green and yellow beads, long hide drops at either bottom corner, 12 1/2 x 22 in.
\$700-900

232

Plains Beaded Hide Knife Sheath, c. 1870s, decorated on one side with two abstract patterns, separated by a row of tin cones, with eight German silver buttons running down the center, with knife, old paper label verso, lg. 9 in.
\$4,000-5,000

235

Plains Beaded Hide Knife Sheath, Dakota Sioux, late 19th century, beaded on both sides, one with diamond the other hourglass designs, with short beaded drop, lg. 7 1/2, wd. 2 1/4 in.
\$700-900

229

Plains Beaded Hide Tab Bag, fourth quarter 19th century, the front beaded below the pouch, fringed with tin cones and long beaded drop at the bottom, lg. 16 in.
\$500-700

233

Northern Plains Beaded Hide Knife Sheath, fourth quarter 19th century, the front decorated with small beads in a geometric pattern, the back with three blue beaded crosses, with quill-wrapped hide drops at bottom, lg. without drops 10 in.
\$800-1,200

236

Central Plains Beaded Hide Knife Sheath, fourth quarter 19th century, the front decorated in multicolored geometric patterns, with inventory tag and knife, lg. 9 1/2 in.
\$3,000-4,000

230

Plains Beaded Hide Knife Sheath, c. 1890s, with rawhide liner, beaded on one side in multicolored designs on white ground, (minor bead loss), lg. 8 in.
\$800-1,200



238

237

Northern Plains Hide Knife Sheath, fourth quarter 19th century, with beaded strap, the sheath decorated at the top with red cloth-backed beaded panels, and beads on side dangles, lg. with strap 27, lg. of sheath 9 1/2 in.
\$800-1,200

238

Plains Beaded Hide Vest, fourth quarter 19th century, soft hide with fringes on the shoulder, necklace, bottom and at the center back, the front decorated with diamond designs on a pink/red ground, with brass buttons, 23 x 15 in.
\$4,000-6,000

239

Northern Plains Scout Outfit, c. 1900, the buckskin shirt with foliate embroidery around the neck opening, collar, and sleeves, the gauntlets with embroidery on fronts, and side fringe, and leggings with side fringe and beaded cuffs, shirt 32 x 85, gauntlets lg. 13 3/4, and leggings lg. 32 in.
\$800-1,200

240

Pair of Beaded Hide Child's Saddle Throws, Cheyenne, fourth quarter 19th century, elk hide, each beaded at the ends which are also fringed, lg. 10 1/2 and 6 1/4 in.
\$400-600

241

Plateau Beaded Cloth Martingale, c. 1900, multicolored bilateral floral seed bead devices on a cloth ground, edged with red cotton cloth, with brass bells from the lower central panel, wd. 40, lg. 11 1/4 in.
\$600-800

242

Plains Blanket with Beaded Hide Strip, fourth quarter 19th century, wool blanket with central beaded hide strip, with four roundels and five abstract rectangle devices, (bead loss, stiffness and hide curling), 51 x 108 in.
\$800-1,200

243

Northern Plains Beaded Muslin Blanket Strip, Assiniboine, c. 1900, the thread sewn strip with roundels beaded with stepped hourglass, triangles, and linear designs, bead colors include pumpkin, cobalt blue, light green, and bottle green on a white ground, lg. 61 in.
\$800-1,200

244

Central Plains Quilled Hairdrop, Sioux, fourth quarter 19th century, five quilled slats, with a quilled roundel at the top, with horsehair at the bottom, lg. 24 in.
\$500-700

247





252

245
Northern Plains Beaded Strap, fourth quarter 19th century, cloth-backed, with geometric designs on the front, and beaded edging, 29 x 3 3/4 in.
\$300-500

246
Northern Plains Model Beaded, Wood and Hide Cradle, fourth quarter 19th century, the wood form with hide cover and decorated with classic Crow beadwork, with two beaded bands holding the doll in place, fringed at top rear and bottom, includes a cloth doll, lg. 13 1/4 in.
\$1,200-1,800

247
Plains Beaded Hide Cradle, Paiute, late 19th century, hide-covered wicker frame cradle, with beaded design elements, and two beaded dolls attached to the rim of the shade, lg. 31 in.
\$1,500-2,000

248
Plains Catlinite Pipe Bowl, fourth quarter 19th century, lg. 7 3/4, ht. 4 1/4 in.
\$300-500

249
Plains Catlinite Pipe Bowl, third quarter 19th century, with lead inlay decoration, lg. 6 1/2, ht. 4 1/2 in.
\$500-700

250
Small Plains Catlinite Pipe Bowl, fourth quarter 19th century, in the shape of a barrel, with line engraving top and bottom of bowl, with metal stand, ht. 2, lg. 2 in.
\$300-500

251
Long Plains Catlinite Pipe Bowl, fourth quarter 19th century, smokestack-style with lead inlay decoration and raised ridge, lg. 7 1/2, ht. 3 7/8 in.
\$700-900

252
Plains Quill-wrapped Pipe Stem and Bowl, early fourth quarter 19th century, the ash stem with burnt file decoration, one end wrapped in red quill, with two ribbons attached, the speckled catlinite bowl with lead inlay at junction with bowl, lg. of stem 19 1/4, lg. of bowl 7 in.
\$1,000-1,500

253
Plains Pipe with Stem and Catlinite Pipe Bowl, late third quarter 19th century, the stem burnt with file marks and painted dots on one side, elbow bowl with line engraved designs each end, lg. of stem 19 1/2, lg. of bowl 3 1/4 in.
\$800-1,200

254
Small Plains Pipe Stem and Bowl, early fourth quarter 19th century, round stem with evenly cut circles, the catlinite bowl with lead inlay at stem end, lg. of stem 15 1/2, lg. of bowl 3 in.
\$800-1,200

255



256



255

Plains Catlinite Pipe Bowl with Twisted Stem, fourth quarter 19th century, the pipe bowl with inlay in lead at top of bowl, the twisted stem with etched and black band decorating the edge, with carved leaf motifs and red ribbon, lg. of stem 27 1/2, lg. of bowl 6 in.

\$2,000-3,000

256

Plains Quilled Wood Stem with Catlinite Pipe Bowl, Lakota, fourth quarter 19th century, flattened ash stem with a panel of tightly plaited multicolored quillwork, with blue ribbon and red dyed horse hair, with elbow catlinite bowl, lg. 28 in.

\$2,000-2,500

258



257

Black Stone Pipe Bowl, Blackfoot, second half 19th century, with four holes at base and three grooves cut on each side, lg. 3, ht. 4 1/4 in.

\$300-500

258

Great Lakes Carved Stone Pipe Bowl, Ojibwa, c. mid-19th century, bowl in the form of a bird head, with catlinite eyes and brass inlay, with metal stand, ht. 3 in.

Provenance: George Terasaki, New York City.
\$1,000-1,500

259



259

Great Lakes Inlaid Pipe Bowl, second half 19th century, square-sided blackstone with lead and catlinite inlay decoration, lg. 6 1/2, ht. 3 5/8 in.

\$1,000-1,500



269
with detail

260

Three Navajo Rattles, fourth quarter 19th century, one with dew claws attached to a leather-wrapped handle with horse hair at the end, the other two leather rattles with horse hair at the ends, lg. 12, 13, and 12 1/2 in.
\$400-600

261

Plains Buffalo Dew Claw Rattle, fourth quarter 19th century, wood shaft wrapped in hide, with dew claws attached, the other end with fringed beaded drop in blue, yellow, and white checker pattern, lg. 29 in.
\$1,500-2,000

262

Plains Deer Claw Rattle, Sioux, fourth quarter 19th century, hide-wrapped wood shaft with deer claws attached, (some missing), lg. 19 1/2 in.
\$800-1,200

263

Two Plains Hide-wrapped War Clubs, fourth quarter 19th century, each wood handle wrapped in rawhide, lg. 23 1/2 and 23 1/4 in.
\$400-600

264

Plains Beaded Club Handle, late 19th century, bead-wrapped wood shaft, the end with two quill-wrapped drops, (stone head missing), lg. 26 3/4 in.
\$300-500

265

Plains Sinew-backed Wood Bow, early fourth quarter 19th century, double curved bow with sinew strapping and original twisted sinew string intact, lg. 40 1/4 in.
\$800-1,200

266

Modoc Carved and Painted Wood Bow, c. late 19th century, painted with red and black geometric designs on one side, lg. 51 1/4 in.
\$600-800

267

Plains Hide Drum, Chippewa, fourth quarter 19th century, a drum with a single rawhide head pegged to a circular hoop, dia. 13 1/4 in.
\$300-400

268

Plains Elk Antler Hide Scraper, 19th century, with etched writing "Pikes Peaks" and the date "1801," lg. 12 1/4 in.
\$300-400

269

Central Plains Catlinite War Club, early third quarter 19th century, made from catlinite in the form of a "gunstock" club, with pewter inlay on both sides of the curved end, one side featuring bird silhouettes, the other a bird, elk and buffalo imagery, pierced at the butt end for wrist strap or attachments, an old paper label and painted inventory number on one side, label partly reads, "...Indian man's war...called...wakan...or Sauk stone club... of Skakopee...", probably made for a ritual/ceremonial purpose rather than warfare, lg. 21 1/2 in.

Provenance: Private collection, Sydney, Australia; Lord Alistair McAlpine Collection, West Green, United Kingdom.

\$18,000-24,000



271

270

Plains Painted Parfleche Cylinder, Blackfeet, fourth quarter 19th century, with fringe from the top, bottom, and one side, painted with multicolored geometric designs overall and with a red trade cloth strips over the end covers, lg. 24, wd. 7 1/4 in.

\$1,500-2,000

271

Northern California Hide Shirt, Yurok skirt with additional parts, 19th century, the deerskin skirt with long cut fringe wrapped and braided with vegetal fibers, with small white clam shells and large abalone plaques, the rear with long buckskin fringe, the arms added at a later date, with beaded band at cuffs, a long double hung necklace of turtle bone on the front, also added later, lg. 33, wd. at armholes 23 in.

\$800-1,200

272

Apache Women's Beaded Hide Cape, early fourth quarter 19th century, young woman's puberty cape, with long side fringes, and tab cut bottom fringe with tin cones, the attached collar with beaded line and fringe with tin cones, paint decorated, the front with a sun motif, (loss to collar), 20 1/2 x 18 1/2 in.

\$2,000-3,000

273

Plains Pipe Tomahawk, third quarter 19th century, with forged head, the ash handle with file branding, brass tack bands, and pierced for attachments, (a few tacks missing), lg. 22 in.

\$8,000-12,000

274

Plains Pipe Tomahawk, third quarter 19th century, the blade with heart cutout, the ash file-branded haft decorated with seven bands of brass tacks, with bone mouth piece, and pierced three times for attachments, (a few tacks missing), lg. 21 1/4 in.

\$30,000-40,000

275

Plains Pipe Tomahawk, third quarter 19th century, the two-piece twisted wood haft wrapped with wire, a lead mouthpiece and the blade decorated with floral designs, lg. 17 3/4 in.

\$5,000-7,000



273



274



275



276

Two Great Lakes Midewiwin Otter Bags, 20th century, two otter pelt medicine bags, paws and tail decorated with beads in multicolored floral devices, on red cloth, together with brass hawk bells, tied at the top with wool, lg. 52 in. each.

\$800-1,200

277

Great Lakes Loom-beaded Bandolier Bag, Ojibwa, fourth quarter 19th century, beaded with multicolored floral designs on a white ground, beaded fringe with bead and wool tassels from the bottom, lg. 37 in.

\$1,000-1,500

278

Ojibwa Pictorial Beaded Medicine Charm, fourth quarter 19th century, a human figure in white beaded outline on wool trade cloth with red cloth border, 10 x 7 in.

Provenance: Sotheby's New York, May 21, 2015, Lot 150; Private collection; Will Channing, Santa Fe, New Mexico.

\$1,800-2,400

279

Woodlands Carved Wood Ladle, 19th century, the wide shallow oval scoop with curving handle terminating to a point, light brown patina, lg. 8 1/4 in.

\$300-500



278



284



288

280

Northeast Carved Wood and Metal Crook Knife, 19th century, the metal blade secured with brass wire, the wood handle with stylized eagle head, lg. 9 in.
\$700-900

281

Early Carved Burl Bowl, possibly Iroquois, 18th/19th century, oval form with carved handles, (shrinkage cracks), ht. 9 1/2, lg. 23, wd. 19 1/2 in.
\$1,200-1,800

282

Iroquois Assumption Sash, fourth quarter 19th century, finger-woven in two panels with dizzying zigzags in red, greens, and blue, with long, twisted fringe, lg. 124 in.
\$800-1,200

283

Small Northeast Carved Wood Mask, Onondaga, New York State, late 19th century, hollowed out mask with open protruding mouth, raised lines on cheeks and forehead, metal around the pierced eyes, pierces on the rim, inventory number "20/1246" painted on the back, 6 x 4 in.
\$2,000-3,000

284

Northeast Painted Wood Mask, Iroquois, late 19th century, Blower Mask, painted on the front in red, with metal around the eyes and black lips, encrusted and cracked pigmented surface, pierced at rim, (chip to top rim), 9 3/4 x 5 1/2 in.
\$3,000-5,000

285

Northeast Painted Wood Mask, Iroquois, late 19th century, hollowed-out face mask painted black with gold around the eyes, three holes at rim, (losses to mouth and rim), 10 x 6 1/2 in.
\$2,000-3,000



290



294

286
Northeast Beaded Cloth Cap, Iroquois, fourth quarter 19th century, black velvet with cotton edging and lining, beaded with multicolored geometric and floral designs, ht. 6, wd. 8 3/4 in.
\$400-600

287
Northeast Beaded Bag and Panel, Iroquois, fourth quarter 19th century, beaded both sides with floral pattern on black velvet, with red cotton edging and interior, (loss to the silk top edging), with beaded panel on dark brown velvet, (minor bead loss), bag size 6 1/2 x 5 1/4, size of panel 8 3/4 x 8 1/4 in.
\$400-600

288
Mohawk Carved and Painted Wood Cradle Board, c. third quarter 19th century, with relief-carved foliate designs and birds on the back, lg. 32 in.
\$6,000-8,000

289
Woodlands Elk Antler Comb, 19th century, decorated with fine incised lines around the four cut-out shapes, on a metal stand, (one tine missing), ht. 3 1/2 in.
\$500-700

290
Cherokee Polychrome Carved Wood Mask, the hollow tapered form with down-turned pierced mouth, four top row teeth, prominent nose with pierced nostrils, pierced eyes, two short curved horns with an intertwined rattlesnake, red and black pigments, on metal stand, ht. 11 1/2 in.
\$1,500-2,000

291
Northeast Birch Bark Pictorial Container, Penobscot, early 20th century, decorated with images of moose and floral designs, tied together with cane strips, ht. 17 3/4, wd. 13 in.
\$600-800

292
Northeast Decorated Birch Bark Moose Caller, 20th century, decorated with floral designs, lg. 15 in.
\$300-500

293
Northeast Woodlands Snowshoes, c. 1900, Bear Paw style, with elaborate rawhide webbing on wood frame, 31 1/2 x 25 1/2 in.
\$300-500

294
Eastern Woodlands Cloth Beaded Tea Cozy, Mi'kmaq, early fourth quarter 19th century, decorated with traditional C-scroll designs in white beads on red and brown cloth, together with beaded silk bands, (minor bead and fabric loss), ht. 12 1/2, wd. 18 in.
\$2,000-3,000



295,
front and
reverse

295

Northeast Moose Hide Coat, Huron, Quebec, mid-19th century, made from moose hide, and decorated at the cuffs, shoulders and around the collar with dyed moose hair embroidery edged with silk and white beads, the bottom of the coat decorated with a wide red silk band with bead decoration, traces of old newspaper found under the triangular collar panels, lg. 41 1/2 in.

Provenance: Private collection, Newcastle, United Kingdom.

\$6,000-8,000



296

Pair of Small Athabascan Snowshoes, late 19th/early 20th century, constructed in wood and sinew and decorated with paint decorated sides, each lg. 22 in.

\$300-400



298



300



299

297

Decorated Bone Container from Lapland, Sami, c. 1900, decorated with elk and geometric patterns, a hook and hoop at either end, lg. 3 in.

\$200-400

298

Greenland Model Kayak with Figures, Umiak, early 20th century, sealskin on wood frame, with five figures dressed in traditional clothing, including wooden tools and paddles, lg. 27 1/2 in.

\$800-1,200

299

Nunivak Island Carved Figurative Tusk, early 20th century, carved in the round with many seals interlocked with walrus, two salmon and a central bird with a fish in its beak, incised details pigmented with black, eyes drilled and filled with baleen, lg. 23 1/2 in.

\$5,000-7,000

300

Large King Island Mask, Alaska, first quarter 20th century, abstracted face with one wide slit for eyes, rim pierced, overall brown patina, on a metal stand, ht. 14 in.

\$1,000-1,500

301

Eskimo Wood Snow Scraper, early 20th century, wood handle with the end in the form of a seal head, with three seal claws attached with sinew, with a small bone inlay on the top, lg. 12 1/4 in.

\$500-700

302

Eskimo Walrus Tusk Cribbage Board, Alaska, c. 1900, the top a cribbage board with scrimshaw designs, the bottom with seal, dog and sled and a fish, the side with feathers, lg. 13 in.

\$400-500



306

303
Eskimo Harpoon Point and Cable, Alaska, c. 1900, walrus hide cable with metal tipped harpoon point and handle with seal heads either side, size coiled 11 1/2 x 9 1/2 in.
\$300-500

304
Eskimo Wood Snow Goggles, Alaska, c. 1900, wood snow goggles with typical slits for the eyes and pierced at each end for wearing, wd. 5 1/4 in.
\$1,500-2,500

305
Eskimo Bone Goggles, c. 1900, decorated with line engraving and the face of a seal, remnants of leather cord, with metal stand, wd. 4 3/4 in.
\$1,200-1,800

306
Eskimo Walrus Ivory Model Boat, early 20th century, the sides of the boat decorated with mythical creatures, with eleven figures attached to the gunwales by pegs, with a larger figure crouching and two narwhals, lg. 8 1/2, wd. 2 1/4 in.
\$800-1,200

307
Large Eskimo Model Kayak, early 20th century, wood frame with stretched seal skin, lg. 43 1/2 in.
\$800-1,200

308
Diomedes Island Doll's Head, Alaska, c. 1900, wood head with glass beads in eyes and as labrets below mouth, ht. 4 1/2 in.
\$800-1,200

309
Eskimo Kayak with Two Figures, Alaska, late 19th century, on a metal stand, lg. 6 1/4 in.
\$300-500

310
Eskimo Decorated Tobacco Pipe, late 19th century, decorated with blackened engravings of hunting and village life, mouth piece a separate piece, the bowl in two parts, with metal stand, lg. 12 in.
\$800-1,200

311
Long Eskimo Tobacco Pipe, late 19th century, decorated in four bands with blackened incised designs, the ends with hunting and village motifs, the bowl a separate piece, with metal stand, lg. 13 in.
\$500-700

312
Wooden Eskimo Model Kayak Torso, late 19th century, torso with seal skin parka, applied with grease, on a wood base, ht. 5 1/2 in.
\$500-700

313
Eskimo Carved Wood Spirit Doll, 19th century, large wood torso with grease applied to the face, with metal stand, ht. 8 in.
\$800-1,200

314
Eskimo Fish and Seal Skin Bag, Alaska, late 19th century, alternate fish and seal skin stitched together, old label reads, "1257/14 Eskimo Woman's bag. Alternate panels of fish skin & seal skin," (minor losses), ht. 11 1/2 in.
\$800-1,200

315
Aleut Pipe and Container, Aleutian Islands, Alaska, c. 1900, wood and pewter pipe with a wood and pewter tobacco container, lg. of pipe 9, box 2 1/2 in.
\$500-700

316
Eskimo Pouch with Stick Game, Alaska, late 19th century, wrapped leather pouch with numerous polished wood sticks with markings, painted description on one side of the pouch, 6 1/2 x 6 1/2 in.
\$300-400

317
Eskimo Needle Case, Alaska, 19th century, long tube with flared end with incised designs, lg. 6 1/2 in.
\$200-400

318
Five Eskimo Game Pieces, Alaska, historic period, in the shape of swimming birds, lg. 2 1/4, 2 1/8, 2 1/4, 1 7/8, and 1 3/4 in.
 Provenance: Dr. John Schaeffer collection, Lake Monroe, Florida.
\$300-500

319
Eskimo Bone Handle, Alaska, 19th century, long bone handle with one end in the form of a bear head, lg. 12 1/2 in.

Provenance: Dr. John Beach Driggs Collection, Delaware. Driggs was an Episcopal missionary physician and educator who served in Point Hope, Alaska, between 1890 and 1910. By family descent.
\$300-500



310



321



324

320

Eskimo Stone Hammer, late 19th century, stone hammer attached by leather straps to wood handle, lg. 8 in.

Provenance: Dr. John Beach Driggs Collection, Delaware. Driggs was an Episcopal missionary physician and educator who served in Point Hope, Alaska, between 1890 and 1910. By family descent.

\$300-400

322

Eskimo Wood Line Reel, Alaska, 19th century, wood reel in the form of a face with bone eye and teeth, (loss), lg. 3 1/4, wd. 1 3/4 in.

Provenance: Dr. John Beach Driggs Collection. Driggs was an Episcopal missionary physician and educator who served in Point Hope, Alaska, between 1890 and 1910. By family descent.

\$800-1,200

324

Two Eskimo Figures, Alaska, 19th century, elongated torsos with no arms and cut out legs, the faces barely defined, ht. 3 1/2 and 2 1/2 in.

\$1,500-2,000

325

Eskimo Carved Wood Human Head, Alaska, 19th century, sitting on a long cone shaped neck, the head with open mouth and sloping brow, ht. 3 1/2 in.

\$400-600

321

Eskimo Seal-shaped Wooden Float, Alaska, 19th century, the seal with glass bead eyes, and implanted with two rings, one with two seals inside ring, ht. 4 1/4, wd. 6 in.

Provenance: Dr. John Beach Driggs Collection. Driggs was an Episcopal missionary physician and educator who served in Point Hope, Alaska, between 1890 and 1910. By family descent.

\$800-1,200

323

Eskimo Female Figure, Alaska, 19th century or earlier, figure of a woman with hands crossed on abdomen, cutout hole at back of head for suspension, lg. 3 in.

\$1,000-1,500

326

Wood Eskimo Seal and Human Head, Alaska, 19th century, a small human head on a narrow neck, and wood seal with nails for eyes, lg. 3 and 4 1/8 in.

\$400-600



339

333

Eskimo Carved Fox, Alaska, 19th century, fox with large tail, drilled eyes, pierced for suspension, (a front leg broken and replaced by wood), lg. 3 1/2 in.

\$500-700

334

Eskimo Carved Container, Alaska, late 19th century, with a large hand on one side and a fox on the other, (lid missing), ht. 1 5/8, wd. 2 1/4 in.

\$500-700

335

Eskimo Whale, 19th century, a whale made from three pieces attached by sinew, mouth and eyes defined, (minor surface loss), lg. 6 1/2 in.

\$800-1,200

336

Eskimo Decorated Fragment, Alaska, 19th century, unknown usage, with circular decorations and two piercings for attachment, with painted Heye collection number "5/3135" on one side, lg. 6 1/2 in.

\$300-500

337

Eskimo Standing Figure, 19th century or earlier, long torso coming to a point, on a metal stand, ht. 2 1/2 in.

\$600-800

338

Eskimo Fluke Container, Alaska, 19th century, in the form of a whale's tail, on a metal stand, lg. 4 1/2 in.

\$400-600

339

Eskimo Wood Mask, Inupiaq, Alaska, early/mid 19th century, naturalistic face mask with pierced eyes, nostrils and mouth, which contains small teeth, (losses), ht. 7 1/2, wd. 5 1/4 in.

Provenance: Dr. John Beach Driggs Collection, Delaware. Driggs was an Episcopal missionary physician and educator who served in Point Hope, Alaska, between 1890 and 1910. By family descent.

\$4,000-6,000

327

Wooden Eskimo Human Figure, Alaska, 19th century, human figure with no arms, the oval face with eyes and nose defined, lg. 3 1/4 in.

\$300-500

328

Two Eskimo Miniature Animal Charms, St. Lawrence Island, Alaska, a fox with a large tail, and another animal possibly a bear, each pierced for attachment, lg. 2 3/8 and 1 7/8 in.

\$300-500

329

Miniature Eskimo Wood Seal Bowl, Alaska, 19th century, with nails for eyes, the body carved out and small hole in the middle, lg. 6 1/2 in.

\$500-700

330

Large Eskimo Harpoon Point, Alaska, late 19th century, whalebone with slate blade, lg. 11 in.

\$500-700

331

Eskimo Whalebone Pick, Alaska, pick attached to handle with leather, (losses and pigmented restoration), lg. 13 3/4 in.

\$400-600

332

Eskimo Bear, Alaska, 19th century, with baleen-filled eyes, (two legs missing), lg. 3 3/8 in.

\$700-900



346



353

340

Eskimo Shaman's Amulet, Alaska, 19th century or earlier, human head with tattoo marks on lips and cheeks, pierced around the edge for attachment, with metal stand, ht. 1 5/8 in.

\$1,500-2,000

341

Eskimo Fox Charm, St. Lawrence Island, Alaska, 19th century or earlier, pierced at the tail, lg. 3 1/2 in.

\$400-500

342

Two Eskimo Seal Toggles, Alaska, 19th century or earlier, the larger pierced twice for attachment, the second with a small hole and drilled at the rear, lg. 2 1/4 and 1 7/8 in.

\$300-500

343

Eskimo Ice Breaker Axe, Alaska, possibly pre-contact period, the large shaped blade attached by walrus hide to a wood handle, lg. of blade 14 1/2, lg. of haft 18 in.

\$800-1,200

344

Large Eskimo Bear, Alaska, St Lawrence Island, pre-contact period, excavated bear charm, (surface loss), lg. 5 3/4 in.

Provenance: Dr. John Schaeffer collection, Lake Monroe, Florida.

\$800-1,200

345

Eskimo Scraper and Cup, Alaska, probably pre-contact period, a hand held scraper and small cup with handle in the form of a whale tail, lg. 3 1/2 and 3 1/4 in.

\$400-600

346

Large Eskimo Walrus Ivory Bear, St. Lawrence Island, Alaska, pre-contact period, possibly Thule, with old label, (surface loss), lg. 6 in.

\$800-1,200

347

Eskimo Carved Seal and Two Birds, Alaska, early historic period, a seal and two swimming birds, with piercing for attachment, (surface loss), lg. of seal 3 1/2, lg. of birds 1 1/2 and 1 3/8 in.

\$300-500

348

Eskimo Fishing Net Needle, Alaska, probably pre-historic period, long pointed projection with two bears one end, (surface and point loss), lg. 11 1/4 in.

\$500-700

349

Eskimo Walrus Ivory Bow Drill, 19th century, pierced at each end for the string, traces of incised designs and writing in paint on each side, with metal stand, wd. 12 3/4 in.

\$700-900

350

Four Eskimo Human Torso Figures, 19th century and earlier, (some with minor surface loss), ht. 1 5/8, 1 1/2, 1 3/4, and 1 1/4 in.

\$300-500

351

Four Eskimo Bow Guards, Alaska, 19th century or earlier, each with slits for attachment to wrist, three with incised designs, with custom stand, ht. 5, 3 1/2, 3 1/4, and 2 1/2 in.

\$700-900

352

Eskimo Human Figure, St Lawrence Island, Alaska, pre-historic period, excavated find, (surface loss and missing right arm), lg. 3 1/2 in.

\$2,000-3,000

353

Miniature Eskimo Snow Goggles, Alaska, probably pre-historic period, with slits for eyes and the front decorated with incised lines and small drilled dots, wd. 2 3/8 in.

\$400-600

354

Large Eskimo Effigy Comb, St Lawrence Island, Alaska, probably pre-historic in period, the long square cut handle with a human head on top, (missing tines), lg. 5 5/8 in.

\$800-1,200

370



371



355

Large Eskimo Hand Adze, Alaska, probably pre-historic, hand tool with deeply incised circular designs on the one side, (cracks, loss and restoration to one side), lg. 11 in.

\$300-500

356

Eskimo Whale Charm, Alaska, possibly pre-contact period, possibly an excavated whale charm, pierced for attachments, mounted on a metal base, lg. 3 3/4 in.

\$700-900

357

Eskimo Comb, St. Lawrence Island, Alaska, probably Thule period, the handle decorated with three bands of incised lines on the front, and also on the back, lg. 3 5/8 in.

\$200-400

358

Eskimo Harpoon Counterweight, St. Lawrence Island, Alaska, probably Thule period, decorated with incised linear designs on both sides, base drilled for attachment, (one side wing restored), ht. 2 3/4, wd. 3 1/2 in.

\$800-1,200

359

Large Eskimo Bow Guard, St. Lawrence Island, Alaska, probably Thule period, pierced on two sides, with incised line design around the outer edge, lg. 4 5/8, wd. 1 3/4 in.

\$500-600

360

Eskimo Bow Guard, Alaska, Thule culture, engraved with circular designs, pierced on each long side for attachment to wrist, on metal stand, 3 5/8 x 1 3/8 in.

\$300-500

361

Eskimo Snow Goggles, St. Lawrence Island, Alaska, Punuk period, approx. AD 800-1400, single-slit-style snow goggles, with peaked and incised designs on front, pierced on either end for strap attachment, old inventory number on the back, wd. 6 in.

\$1,000-1,500

362

Fragment of an Eskimo Harpoon Counterweight, St. Lawrence Island, Alaska, Punuk period, approx. AD 800-1400, (missing the two outer arms), ht. 2 5/8 in.

\$200-400

363

Large Eskimo Handle, Alaska, Punuk period, approx. AD 800-1400, each end with a large hole, incised designs on the front and raised loop for attachment on the bottom, lg. 8 3/4 in.

\$700-900

364

Eskimo Harpoon Counterweight, St. Lawrence Island, Alaska, Punuk period, approx. AD 800-1400, turreted type with incised line designs, with metal base, ht. 2 1/2 in.

\$1,200-1,800



373

365

Eskimo Handle, Alaska, Punuk, AD 500-1200, engraved with fine line designs and two holes for attachment, with a metal stand, lg. 7 in.

\$600-800

366

Two Eskimo Artifacts, Alaska, Old Bering Sea III period, c. AD 300-500, for the handle fragment, and probably Thule period for the fish, (surface loss), both lg. 5 1/4 in.

\$300-500

367

Three Small Eskimo Figures, St. Lawrence Island, Alaska, the larger Old Bering Sea period, with linear incised designs, lg. 2, 1 1/2, and 1 in.

\$1,500-2,000

368

Eskimo Harpoon Socket Piece, Alaska, possibly Old Bering Sea III period, c. AD 300-500, decorated with linear designs, and drilled through the middle for attachment, lg. 2 3/4 in.

\$500-700

369

Eskimo Bowguard, Alaska, Okvik, Old Bering Sea period, decorated on the front with fine line engraving in the form of a human face, two narrow slits on either side for attachment, lg. 3 1/2, wd. 1 3/8 in.

\$1,200-1,800

370

Large Northwest Coast Polychrome Totem Pole, c. 1920s, with figures from the beaver clan, together with the bear and raven clan crest figures, with cutout back and small wood base, varnished surface, ht. 89 in.

\$4,000-6,000

371

Northwest Coast Adze, 19th century, the wood handle with the head of a seal at one end, the metal adze attached with cord, mounted, lg. 9 1/2, ht. 3 1/2 in.

\$1,200-1,800

372

Northwest Coast Potlatch Ladle, late 19th century, cedar ladle with dark patina, with custom stand, (split at end of scoop), lg. 13 1/2 in.

Provenance: Joe Gerena, New York City.

\$2,000-3,000

373

Northwest Coast Button Blanket, 1920s, red and dark blue wool, two black cotton calico-lined neck tabs or tie-ons, double-headed raven crest outlined with 770 small shell buttons, with 234 other larger and smaller buttons as accents to the raven, red double borders also edged with 717 buttons (total of 1721 shell buttons), all hand-stitched, 59 x 68 in.

\$2,000-3,000



374

374

Northwest Coast Chilkat Blanket, early 20th century, woven of mountain goat wool and cedar bark, in a classic form line pattern on a pale yellow ground, incorporating animal parts relating to a clan's crest animal, (colors faded), 49 x 63 1/2 in.

\$10,000-15,000



375



378

375

Northwest Coast Grease Bowl, Tlingit, c. 1900, grease bowl with a raven head at each end, with shell inlay eyes, and bone inlay and beads embedded around the rim, lg. 12, wd. 7 in.

\$800-1,200

376

Northwest Coast Octopus Amulet, Tsimshian, late 19th century, wood, the lower part a fish tail, torso with octopus suckers and the head of a human, on a metal stand, ht. 2 1/4 in.

\$1,000-1,500

377

Northwest Coast Wooden Paddle, late 19th century, the blade with stylized killer whale designs, dry patina, (surface abrasions), lg. 49 1/4 in.

\$800-1,200

378

Northwest Coast Polychrome Woven Hat, Tlingit, late 19th century, decorated with painted clan crest imagery, (minor old restoration with glue applied), ht. 9, wd. 14 1/2 in.

Provenance: Bill Henderson Collection, Seattle.

\$6,000-8,000



379

379

Northwest Coast Beaded Hide Tunic, Tlingit or Kutchin, tanned hide overlaid across the shoulders, cuffs and down the front in red wool cloth stitched in beadwork, with stylized openwork designs, the v-shaped hemline with red wool zigzags outlined in white beadwork, lg. 39 in.

Provenance: Sotheby's New York, May 16, 2012, Lot 31.

\$5,000-7,000

380

Northwest Coast Whalebone Trap Stick, c. 19th century, the finial in the form of a stylized animal head over a human head, with metal stand, lg. 11 in.

Provenance: Barbara Johnson Collection, New Jersey.

\$800-1,200

381

Northwest Coast Carved Wood Raven Rattle, late 19th century, in the form of a raven, with the shaman holding a frog and receiving transference via its tongue, with secondary bird head behind, the belly with abstract animal face, (the underside with considerable restoration), lg. 13 in.

\$3,000-5,000



381



382



385

382

Northwest Coast Effigy Halibut Hook, 19th century, carved in the form of a stylized standing mythical figure, with metal hook and cedar bark wrapping, (loss to arms and part of a secondary figure), ht. 11 1/4 in.
\$1,000-1,500

383

Northwest Coast Horn Spoon, c. 1900, mountain goat horn, with abalone shell inlay, the handle made up of a bear and a human figure, lg. 8 in.
\$500-700

384

Northwest Coast Horn Spoon, c. 1900, mountain goat horn, metal pins and abalone shell inlay, the handle made up of a human figure with animal above, lg. 9 in.
\$500-700

385

Northwest Coast Horn Spoon, fourth quarter 19th century, mountain goat horn, in two parts, the scoop attached with metal pin, the handle made up of complex clan crest animals, lg. 11 7/8 in.
\$1,000-1,500

386

Northwest Coast Model Totem Pole, c. 1900, wood polychrome pole with a standing figure standing on an animal's head, holding the tentacles of an octopus, carved in the round on a black base, ht. 15 3/4 in.
\$800-1,200

387

Northwest Coast Copper Dagger, late 19th century, copper blade with wood pommel in the form of a raven, leather-wrapped handle, lg. 15 1/2 in.
\$2,000-3,000

388

Northwest Coast Argillite Totem Pole, Haida, late 19th century, with four clan animal figures in a typical stacked and graduated design, missing the base, lg. 6 1/8 in.
\$500-1,000



386



393



396

389
Six Northwest Coast Spoons, Bella Bella and Haida, 19th century, mountain goat horn spoons, two with labels assigning one spoon to the Bella Bella, one to Massett, British Columbia, lg. 7, 6, 6, 6, 6, and 5 1/2 in.
\$700-900

390
Prehistoric Slate Gorget, pierced with two holes for attachment, marked on either end with four shallow cuts, inventory number "8915" painted on top side, lg. 3 5/8 in.
\$300-400

391
Two Prehistoric Lanceolate Points and Cumberland Point, lg. 5, 3, and 3 1/8 in.

Provenance: Private collection, Vermont.
\$300-500

392
Large Collection of Prehistoric Arrowheads, sizes vary from 4 1/8 to 3/8 in.

Provenance: Private collection, Vermont.
\$300-400

393
Prehistoric Flint Ridge Dovetail Point, wide blade with small dovetail, lg. 4 5/8 in.

Provenance: Private collection, Vermont.
\$800-1,200

394
Three Prehistoric Flint Ridge Dovetail Points, lg. 3 7/8, 3 3/4, and 3 1/2 in.

Provenance: Private collection, Vermont.
\$500-700

395
Three Prehistoric Flint Ridge Dovetail Points, (minor edge chips), lg. 3 5/8, 3 3/8, and 3 1/8 in.

Provenance: Private collection, Vermont.
\$400-600

396
Prehistoric Flint Ridge Dovetail Point, Ohio, inscribed on one side "Frank S...Lake Co. O.," (minor chip near point), lg. 5 3/4 in.

Provenance: Private collection, Vermont.
\$2,000-3,000

397
Prehistoric Lanceolate Point, lg. 7 in.

Provenance: Private collection, Vermont.
\$300-400

398
Four Prehistoric Flint Ridge Dovetail Points, lg. 4 1/2, 3 5/8, 3 5/8, and 2 7/8 in.

Provenance: Private collection, Vermont.
\$500-700

399
Five Prehistoric Tools and Points, two pre-form points, a drill point and two large points, lg. 5 1/8, 4 3/8, 3 1/2, 3 1/2, and 2 1/8 in.

Provenance: Private collection, Vermont.
\$300-500

400
Six Prehistoric Flint Ridge Dovetail Points, various stone types, lg. 3 5/8, 3 1/2, 3 3/8, 3 3/8, 2 5/8, and 1 1/2 in.
\$300-500



404



407



409

401

Seven Prehistoric Points and Cutting Tools, made from various types of stone, lg. 4 5/8, 4 1/2, 4 3/4, 4 1/4, 3 7/8, 3 3/4, and 3 1/2 in.
\$200-300

402

Hopi Polychrome Carved Wood Katsina, corn katsina, painted yellow with arms nailed to sides, painted cotton kilt and long mouth, right hand holding a canteen, ht. 10 3/4 in.
\$500-700

403

Hopi Polychrome Carved Wood Katsina, with white-painted body and short legs, casemask with crown and large tablita, (paint loss, missing one foot), ht. 12 3/4 in.
\$800-1,200

404

Hopi Polychrome Carved Wood Katsina, cut-out arms, long kilt and short legs, the casemask with protruding mouth and eyes, with two frogs painted on the back, (arms and feet broken and restored), ht. 8 3/4 in.
\$1,000-1,500

405

Hopi Polychrome Carved Wood Katsina, small figure of a woman, with black hair and torso and white skirt, ht. 6 1/2 in.
\$400-600

406

Hopi Polychrome Carved Wood Katsina, maiden doll wearing a blanket, with ornate coiffure, mounted on a wood base, (paint loss), ht. 7 1/4 in.

Provenance: Purchased from Charles Derby, Northampton, Massachusetts, in 1980.
\$800-1,200

407

Hopi Polychrome Carved Wood Katsina, c. 1920s, protruding ears and mouth, with white kilt, with pink, orange, yellow, and green decoration, ht. 7 in.
\$800-1,200

408

Hopi Polychrome Carved Wood Katsina, with black case mask, long protruding nose, (missing feet), ht. 7 in.
\$500-700

409

Hopi Polychrome Carved Wood Katsina, c. 1920s, with protruding mouth, and ear, (one ear missing and feet broken, paint loss), ht. 10 in.
\$800-1,200

410



410

Hopi Polychrome Carved Wood Katsina, c. 1920s, white kilt, black torso, and small tablita, ht. 10 in.
\$800-1,200

411

Hopi Polychrome Carved Wood Katsina, a larger example with protruding mouth, red yarn for hair, a white kilt and hands and red torso, (missing left foot), ht. 12 in.
\$800-1,200

412

Hopi Polychrome Carved Wood Katsina, c. 1920s, with large protruding ears and mouth, ht. 9 in.
\$800-1,200



411

413

Taos Painted Wood and Rawhide Drum, early 20th century, with blue, yellow, and red pigments, hide cover, held by hide lashing, (paint loss), ht. 13 1/2 in.
\$300-400

414

Pueblo Painted Dance Shield, C. 1920s, made from harness leather, decorated on the front in five colors, with the typical horned motif and the sun, (minor paint loss and small repair at top), dia. 19 in.
\$2,000-3,000

415

Cabinet Card Photograph of Chief Wolf Robe, by Oliver, Oklahoma City, photo 5 3/4 x 4 in.
\$300-500



412

416

Cabinet Card Photo of a Native American Holding a War Shield, by Oliver, Oklahoma City, photo 5 3/4 x 4 in.
\$300-500

417

Cabinet Card of a Native American Indian, by Drum, Pawhuska Oklahoma Territory, photo 5 3/4 x 4 in.
\$300-500

418

Cabinet Card Photo of an Indian Chief, by Standiford, Parsons, Kansas, photo 5 3/8 x 4 in.
\$300-500



419

Two Monroe Tsatoke Artworks, *Horse*, acrylic on paper, signed "Tsatoke 29," and a pastel portrait of an Indian chief, signed lower right "Tsatoke 33," image sizes 9 1/4 x 7 3/4 and 12 x 10 in., framed.
\$200-400

420

John Nieto Color Serigraph, titled *Fancy Dancer*, edition number 121/130, signed lower right, framed, image size 33 1/2 x 27 in.
\$800-1,200

421

Contemporary Inuit Lithograph, titled *Raven in Red*, edition of 48/50, Dorset 1996, signed lower right "Sheojuk," Sheojuk Etidlooie (Canada, 1929-1999), framed, image size 22 1/4 x 29 3/4 in.
\$300-400

422

Navajo Silver Salad Fork and Spoon, stamp decorated fronts, stamped on the back "UNITA5," attributed to Kirk, lg. 8 1/2 in. each.
\$300-400

423

Large Navajo Silver Salad Set, stamp decorated on the fronts, stamped on the back "UNITA6," attributed to Don Smouse of Borrego Pass, lg. 9 1/2 and 9 1/4 in.
\$300-400

414

424

Eight Navajo Silver Spoons, c. 1920s, each with single turquoise stone, and stampwork designs, lg. long spoons 7, short 3 1/2 in.
\$300-500

425

Navajo Silver Box, the ketoh-style hinged lid with raised stampwork, the box with stamped decorated band around sides, 3 x 2 1/4 x 1 1/8 in.
\$300-400

426

Navajo Silver and Turquoise Watch, Timex watch on a silver and turquoise band, lg. 6 in.
 Provenance: Packard's Indian Trading Co., Santa Fe, New Mexico; Vincent Price Collection.
\$400-600

427

Southwest Silver and Coral Pendant, Zuni, marked with initials "JH Sterling" on the back, pendant 1 7/8 x 1 1/4 in.
\$200-400

428

Four Southwest Silver and Turquoise Pins, Three Zuni and a Navajo, two needle point turquoise round pins, a jet, shell, coral and turquoise inlay katsina, and a Navajo silver bird, sizes 2 1/4 x 2 1/4, dia. 1 3/8, 1, and ht. 2 in.
\$300-500

429

Navajo Silver and Turquoise Sandcast Bracelet, c. 1920s, with a single large stone in a double bezel, interior cir. 5 1/8, with 1 1/8 in. gap.
\$300-400



433

430

Large Navajo Silver Cuff Bracelet, wide cuff with one large turquoise stone and four square cut coral settings in raised bezels, with applied scrollwork, balls, and a feather, signed with former owner's name, wd. 2 1/8, gap, 2, interior cir. 6 in.

\$300-500

431

Two Southwest Silver and Turquoise Multi-Stone Bracelets, Zuni, a cluster cuff with large central rondel, the second needle point stones in four rows on four bands, interior cir. 5 1/2 with 1 1/8 gap, interior cir. 5 1/4 with 1 3/8 in. gap.

\$500-700

432

Four Navajo Silver and Turquoise Bracelets, one with three large green stones, one with one large central green stone, the third sandcast with three stones, and a cuff with four turquoise settings and a coral setting, signed "Tom Monk Baldwin Navajo silversmith Winslow Arz 1976," interior cir. 6 with 1 1/4 gap, interior cir. 5 with 1 1/4 gap, interior cir. 5 1/2 with 1 3/8 gap, and interior cir. 5 1/8 with 1 1/2 in. gap.

\$300-400

433

Five Navajo Silver and Turquoise Bracelets, wide cuff with single raised stone signed "Ella," an open sand cast with single Chinese turquoise setting, third signed "B Morgan," cuff with 14kt gold center line, one signed "Thomas" with central coral stone and the fifth with diagonal pattern of turquoise, interior cir. 5 1/2 with 1 gap, interior cir. 5 1/8 with 1 1/8 gap, interior cir. 5 1/8 with 1 1/8 gap, interior cir. 5 3/4 with 1 gap, and interior cir. 5 1/2 with 1 1/8 in. gap.

\$400-600

434

Contemporary Navajo Liquid Silver Necklace, multi-strand necklace of large "liquid silver" beads with multiple turquoise nuggets at bottom of each strand, lg. 14 in.

\$400-600

435

Contemporary Navajo Coral Necklace, attributed to Orville Tsinnie, ten-strand coral bead necklace with gray heishi, lg. 20 in.

\$400-600

436

Contemporary Santo Domingo Heishe Necklace and Earrings, attributed to Martin Lovato, eleven strands of fine hand-drilled heishe in graduated colors of brown and tan, lg. of necklace 12 3/4, lg. of earrings 2 1/4 in.

\$300-500

437

Contemporary Santa Domingo Heishe Necklace, attributed to Mary Corin, with thirty strands of hand-cut, graduated brown/tan heishe, lg. 17 in.

\$800-1,200

438

Contemporary Navajo Necklace and Earrings, signed "Delbert Vandever, Sterling," on necklace, with large stone on one side and small coral on the other, chain link necklace and feathers in silver, lg. of necklace 14 1/2, lg. of earrings 2 1/2 in.

\$500-700

439

Navajo Silver and Turquoise Leaf Necklace, c. 1940s, seven long oval turquoise sets in leaf-shape silver bezel pendants, with handmade silver flat chain necklace and clasp, lg. 10 1/4 in.

\$400-500

440

Navajo Silver and Turquoise Squash Blossom Necklace, strung with small silver beads, with seven turquoise-filled squash blossoms on each side, the naja decorated with the same flat cut mosaic turquoise as the blossoms, lg. 14 1/2 in.

\$700-900

441

Navajo Silver and Turquoise Squash Blossom Necklace, with silver beads, the ten squashes decorated with inlaid turquoise, as is the naja below, lg. 14 in.

\$400-600

442

Two Southwest Coral and Turquoise Necklaces, a five-strand coral and turquoise necklace, and a seven-strand shell and turquoise necklace, each with silver cone clasps, lg. 12 and 13 in.

\$300-500

443

Navajo Silver and Russet Turquoise Squash Blossom Necklace, strung with small silver beads, with squash blossoms with single russet stones, the naja decorated with the same turquoise, lg. 15 in.

\$300-500

444

Southwest Turquoise Squash Blossom Necklace, strung with silver beads, twelve squashes each with thirteen turquoise stones, the large naja decorated with a profusion of turquoise settings, lg. 16 in.
\$400-600

445

Navajo Silver Box and Bow Squash Blossom Necklace, each bow with a single oval turquoise setting, naja also with a single oval setting, lg. 13 in.
\$400-600

446

Two Navajo Silver Box and Bow Necklaces, squash blossom style, one with single coral set in bow and naja, the second with turquoise, the naja with six stones, lg. 15 and 14 in.
\$400-600

447

Navajo Silver and Coral Squash Blossom Necklace, with small silver beads, twelve squashes with coral settings, the large naja with seven coral settings surrounded by fine ropework, lg. 15 in.
\$1,000-1,500

448

Two Southwest Turquoise and Coral Necklaces, a multi-strand fine coral bead necklace, and a ten-strand bead and turquoise necklace, lg. 13 1/2 and 14 in.
\$400-600

449

Two Southwest Turquoise and Shell Necklaces, the larger with four strands and two jacals, the second a single strand, lg. 15 3/4 and 12 1/2 in.
\$700-900

450

Southwest Silver Squash Blossom Necklace, Zuni, marked "SB," silver beads, decorated with Zuni imagery, the naja a complex feather design, lg. 13 1/2 in.
\$300-500

451

Southwest Silver Inlay Necklace, Zuni, silver beaded squash blossom style with katsina masks for the blossoms and two on the naja, inlaid with jet, turquoise, shell and coral, lg. 14 1/4 in.
\$500-700

452

Two Strand Zuni Turquoise Necklace, turquoise and heishi necklace with a pair of suspended jacals, lg. 17 in.
\$300-500

453

Zuni Roadrunner Necklace, c. 1940/50s, strung with silver beads, each bird inlaid with jet, turquoise, coral, and shell, naja decorated with a central roadrunner, lg. 14 1/4 in.
\$300-500

454

Navajo Silver and Turquoise Naja, large stamp decorated naja with one large and two small turquoise settings, 3 1/4 x 2 3/4 in.
\$300-500

455

Navajo Silver and Turquoise Concha Belt, six oval conchas with seven matching butterfly spacers, each with a central turquoise stone, the buckle with eight stones, on a narrow leather belt, lg. 42 1/4 in.
\$1,200-1,800

456

Navajo Silver and Turquoise Concha Belt, with ten small silver conchas with turquoise settings, and nine stamped silver and turquoise spacers on a narrow leather belt, lg. 37 1/2 in.
\$400-600

441



455



456





458



463

457

Navajo Silver Concha Belt, with ten silver stamp-decorated conchas on a narrow leather belt, lg. 43 1/2 in.

\$500-700

458

Contemporary Silver Concha Belt, made by Mitchell Zephier, known as Pretty Voice Hawk, with artist's stamp and "PVH 1991" stamped on buckle, with thirteen silver buffalo head conchas and fourteen spacers on a narrow leather belt, lg. 35 1/4 in.

\$400-600

459

Navajo Silver Applique Concha Belt, c. 1950s, nine conchas with a buckle in similar design, on a narrow leather belt, lg. 34 1/2 in.

\$300-500

460

Two Small Navajo Silver Concha Belts, one with ten oval conchas each with a central turquoise stone, the buckle with two stones, the second with eleven silver conchas and rectangular buckle, both on narrow leather belts, lg. 44 1/2 and 32 in.

\$500-700

461

Two Navajo Silver Concha Belts, one with ten conchas and eleven butterfly spacers attributed to Roger Skeet Sr., the second with eleven conchas and twelve spaces, with "R" marked on buckle, attributed to Roger Skeet Jr., lg. 34 1/2 and 42 in.

\$500-700

462

Navajo Silver and Turquoise Concha Belt, eleven stamp-decorated oval conchas with a single stone in center, buckle with two stones, on a narrow leather belt, lg. 35 1/2 in.

\$400-600

463

Zuni Silver and Turquoise Concha Belt, with twelve silver concha, each center inlaid with onyx, turquoise, and coral, on a narrow leather belt, lg. 36 3/4 in.

\$1,500-2,000

464

Plateau Corn Husk Bag, c. 1900, each side with different polychrome geometric designs, cotton fabric liner and hide cord, (loss to fabric edging at opening), 16 x 10 in.

\$200-300

465

Plateau Corn Husk Bag, c. 1900, with polychrome designs done in yarn and dyed husk, red trade cloth edging at opening, (minor damage), 10 x 8 1/4 in.

\$600-800

466

Plateau Corn Husk Bag Nez Perce, early 20th century, both sides with colorful geometric designs done with commercial yarn, with hide strap at opening, includes custom wall mount, 17 x 13 in.

\$800-1,200

467

Large Plateau Corn Husk Bag, Nez Perce, early 20th century, both sides with colorful geometric designs done with commercial yarn, includes custom wall mount, 20 3/4 x 14 1/2 in.

\$1,000-1,500

468

Contemporary Navajo Two Grey Hills Weaving, made by Mary Yazzie, from the historic Toadlena Trading Post, Newcomb, New Mexico, with label attached and a certificate of authenticity from the Toadlena Trading Post, 30 x 23 in.

\$800-1,200



467



468

469

Contemporary Navajo Weaving, made by Lindy Ney at Crownpoint Rug Weaving Association, New Mexico, c. 2000, label attached, 51 1/2 x 29 1/2 in.
\$300-500

470

Small Contemporary Navajo Textile, made by Marie Stewart, at Crownpoint Rug Weaving Association, New Mexico, label attached, 34 x 27 1/4 in.
\$200-500

471

Contemporary Navajo Weaving, made by Eleanor Yazzie, titled "Grand Canyon, Twin Rocks," 43 x 62 in.
\$800-1,200

472

Contemporary Navajo Weaving, made by Latricia Desiderio, titled "Banded Spider Women Cross," label attached, 83 x 53 in.
\$700-900



473



474

473

Contemporary Navajo Weaving, made by Phyllis Clee, Crownpoint Rug Weaving Association, New Mexico, label attached, 55 1/2 x 49 in.

\$600-800

474

Contemporary Navajo Weaving, made by Rebecca Paul, Crownpoint Rug Weaving Association, label attached, 50 1/2 x 44 in.

\$600-800

475

Navajo Wool Shawl, c. 1950s, gray and red, with hand-knotted red fringe on four sides, applique and embroidery, 89 x 82 in.

\$500-700

476

Navajo "Yei" Rug, c. 1950s, with fourteen Yei dancers on a gray ground, framed by a linked arrow motif, 91 x 54 1/2 in.

\$400-600

484



477

Navajo Ganado Rug, three black and white zigzag patterns on a bold red background with a narrow black frame, 47 x 33 in.
\$400-600

478

Navajo Regional Rug, c. 1940s, with stepped diamonds, a serrated black border and gray ground, (old repair, minor stain), 71 x 43 in.
\$700-900

479

Two Navajo Rugs, c. 1930s, 64 3/4 x 37 1/2 and 55 1/4 x 34 3/4 in.
\$200-300

480

Two Navajo Rugs, c. 1930s, the larger with a central stepped diamond pattern on a gray ground, the smaller with three linked diamond columns on a brown ground, and black border, 61 x 40 and 50 1/2 x 35 in.
\$300-500

481

Navajo Banded Blanket, decorated with alternate colored bands with arrows in each, 52 x 34 1/2 in.
\$300-500

482

Navajo Regional Rug, c. 1930s, with two serrated double-pointed arrows in the center of a natural colored ground, 61 x 38 1/2 in.
\$1,000-1,500

483

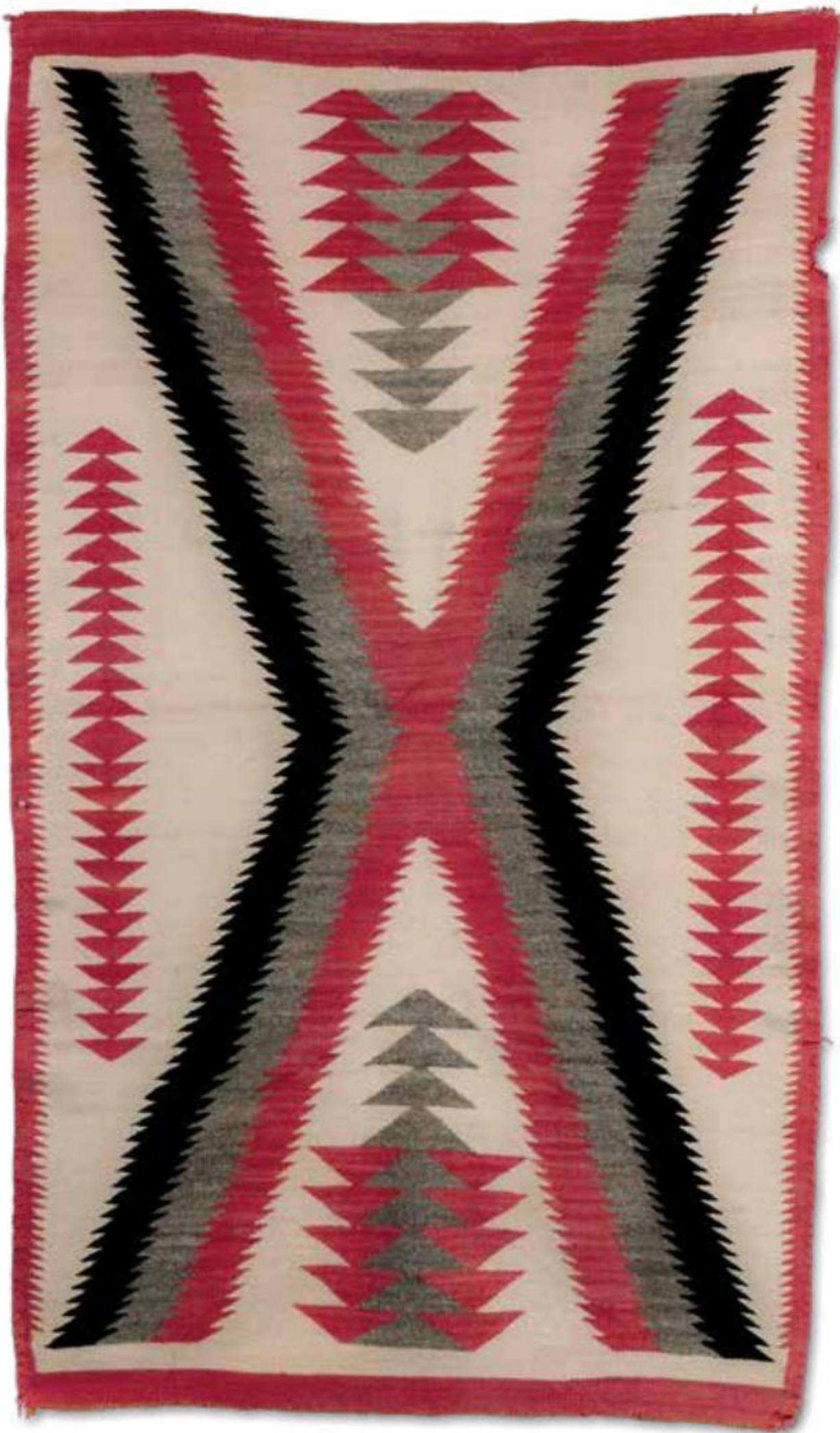
Navajo Regional Rug, c. 1930s, dark border framing two star designs and a row of three whirling log motifs, (minor stains and fading), 68 1/2 x 43 in.
\$700-900

484

Navajo Ganado Rug, c. 1930s, decorated with multicolored feathered diamonds on a natural color ground with a black border, 74 x 58 in.
\$800-1,200

485

Navajo Regional Rug, c. 1930s, central stepped diamond pattern on gray ground, surrounded by black zigzag and red border, (minor fringe fraying), 93 x 59 1/2 in.
\$1,000-1,500



493

486

Navajo Rug, c. 1930s, with three central diamonds on a gray ground with black border, 74 x 43 in.

\$300-500

487

Large Navajo Rug, c. 1930, banded design on a cream ground, 132 x 82 in.

\$800-1,200

488

Navajo "Yei" Rug, c. 1930s, with four Yei dancers on a gray ground, (small hole), 57 x 40 1/2 in.

\$300-400

489

Large Navajo Transitional Rug, c. 1920s, the red stepped border with central dark band, the center decorated with two large cruciform designs, with two smaller diamond motifs on a gray-brown ground, (minor repairs), 101 x 69 in.

\$1,500-1,800

490

Large Ganado Transitional Navajo Rug, c. 1920s, with checkered cross center and bold terracing, 65 x 100 in.

\$1,200-1,800

491

Two Navajo Rugs, the larger a serrated eye-dazzler pattern, the smaller with banded diamond designs, 82 x 39 and 64 x 30 in.

\$400-500

492

Navajo Banded Blanket, early 20th century, wide red and gray bands, with narrow black and brown bands, 55 x 29 in.

\$400-500

493

Large Navajo Rug, decorated with a large central serrated "X" design in red, gray, and black on a cream ground, with red border, (minor edge loss and repair in one place), 83 x 49 in.

\$300-500



496

494

Navajo Banded Blanket, c. 1920s, with four red, black, and yellow banded designs on a natural background, 69 1/2 x 63 in.

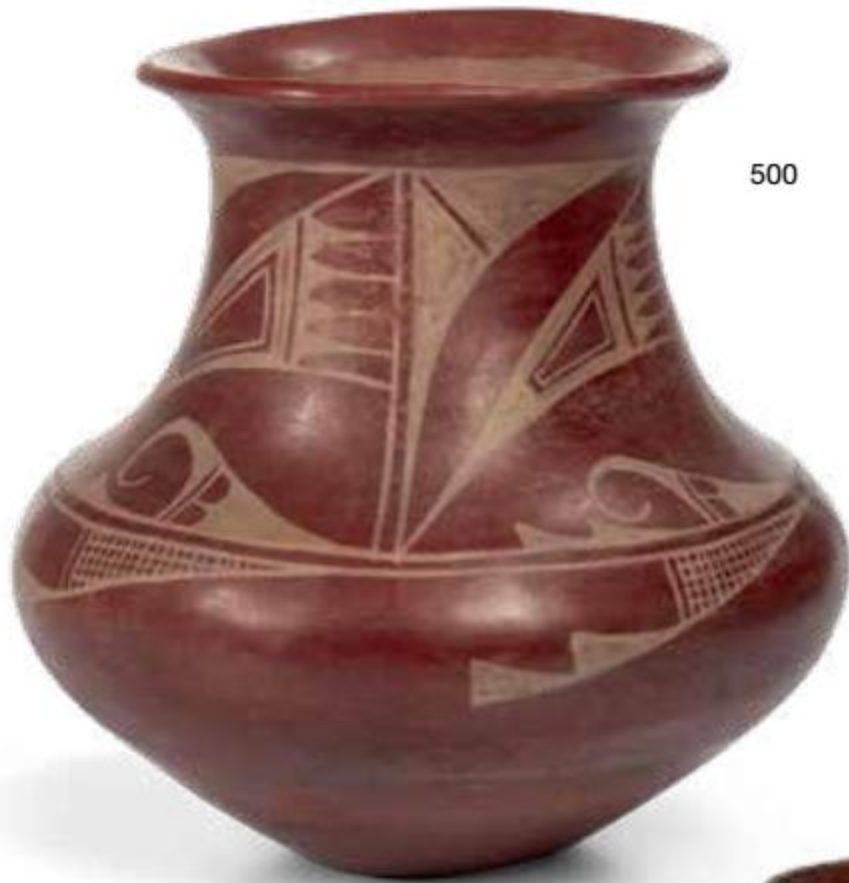
Provenance: Marcy Burns, New York City.
\$1,200-1,800

495

Navajo Transitional Woven Textile, c. 1900, loosely woven with serrated eye-dazzler diamonds both large and small on a gray ground, with red end bands, 65 x 45 in.
\$800-1,200

496

Rio Grande Blanket, third quarter 19th century, two widths seamed, two-ply handspun wool, woven in a banded pattern with natural undyed white and brown and indigo-dyed blue, 56 x 52 in.
\$2,500-3,500



500



510



512

497

Contemporary San Ildefonso Pottery Bowl, signed on the base "Isabel Pena," black-on-black, with joined arrowhead motifs below the rim, (abrasions and inner rim chips), ht. 5, wd. 8 in.
\$300-500

499

San Ildefonso Black-on-black Pottery Bowl, signed "Tonita & Juan" on base, Tonita Roybal (1892-1945) and Juan Cruz Roybal (1896-1990), decorated below the rim with a simple repeated bear paw design, dia. 9 in.
\$500-700

501

San Ildefonso Black-on-black Pottery Jar, trace of signature on base, possibly "Tonita," decorated below the rim with abstract designs, ht. 7 1/4, wd. 7 in.
\$200-300

498

San Ildefonso Black-on-black Pottery Jar, signed on the base "Tonita," Tonita Roybal (1892-1945), with an Avanyu design above the low shoulder, ht. 6 3/4, wd. 8 in.
\$400-500

500

Contemporary San Ildefonso Redware Vase, c. 1920-30s, signed on the base "Tonita," attributed to Tonita Roybal (1892-1945), decorated in a traditional abstract design, (small rim repair), ht. 10, wd. 9 in.

Provenance: Bertram and Ruth Malenka Collection, Belmont, Massachusetts.
\$400-600

502

San Ildefonso Black-on-black Pottery Jar, unsigned, decorated with an Avanyu design, ht. 8, wd. 7 in.
\$200-300



514

503

Contemporary San Ildefonso Vase, inscribed on base "Tse Pe and Dora of San Ildefonso, 1973," blackware with an engraved bear and paw designs, ht. 7, wd. 6 3/4 in.

Provenance: Bertram and Ruth Malenka Collection, Belmont, Massachusetts.

\$500-700

504

Contemporary San Ildefonso Seed Jar, signed on the base "Rose," Rose Gonzales, blackware jar with deep-cut abstracted swirling design, ht. 8, wd. 9 in.

\$500-700

505

Contemporary San Ildefonso Pottery Jar, signed on the base "Angelita Sanchez San Ildefonso," black-on-black with feather pattern, ht. 3 1/2, wd. 5 in.

\$200-400

506

Contemporary San Ildefonso Blackware Pot, signed on the base "Juanita Wo-Peen," c. 1935, decorated with the classic Avanyu motif spiraling down the vessel, ht. 6, wd. 5 1/2 in.

Provenance: Steve Elmore, Santa Fe, New Mexico.

\$600-800

507

Contemporary San Ildefonso Pottery Vessel, signed on the base "Carmelita Dunlap San Ildefonso Pueblo," black-on-black with abstract feather and geometric designs from rim to base, ht. 8 1/4, wd. 7 in.

\$800-1,200

508

Contemporary San Ildefonso Pottery Jar, signed "Rose" on the base, Rose Gonzales, c. 1950s, black-on-black with an abstract design below the rim, ht. 5, wd. 6 in.

\$200-400

509

Pair of San Ildefonso Black-on-black Pottery Candlesticks, each signed "Marie" on the inner base, (one with a chip on base), both ht. 6 1/2 in.

\$300-500

510

Contemporary San Ildefonso Pottery Jar, Tony Da, initialed on the bottom, two-color glaze with two inset turquoise stones below the shoulder, ht. 6, wd. 6 in.

\$1,500-2,000

511

Laguna Polychrome Pottery Jar, with a strong Zuni design influence, with stepped hatched design below the shoulder and checkered design at the neck, ht. 6 1/2, wd. 8 in.

Provenance: Bertram and Ruth Malenka Collection, Belmont, Massachusetts.

\$400-500

512

Southwest Polychrome Pottery Olla, Acoma/Laguna, late 19th/early 20th century, decorated in black and brown with flowers and geometric designs on a cream ground, (rim chips, paint loss), ht. 12, wd. 12 1/4 in.

\$1,200-1,800

513

Southwest Polychrome Pottery Olla, Acoma, early 20th century, high shoulder and tapering rim with red painted bottom, decorated with black-on-white abstract designs, (paint loss), ht. 9 3/4, wd. 11 1/2 in.

\$800-1,200

514

Southwest Polychrome Pottery Olla, Acoma, first quarter 20th century, with concave base, high rounded shoulder and tapered neck, with black and red-brown bold geometric foliate designs and large stylized parrots, (large rim chip, reassembled from fragments), ht. 11 3/4, wd. 12 1/2 in.

\$1,200-1,800



516



519

515

Acoma Polychrome Pottery Wedding Jar, first half 20th century, decorated with abstract designs in black and brown on a cream ground, (paint loss), ht. 9, wd. 7 in.
\$400-500

518

Southwest Polychrome Pottery Olla, Acoma, first quarter 20th century, decorated in three colors with an undulating rainbow flanked by abstract foliate designs, (paint loss), ht. 11 3/4, wd. 12 in.
\$800-1,200

521

Acoma Polychrome Pottery Vessel, early second quarter 20th century, with stylized geometric and foliate designs, red bottom and inner rim, (minor paint losses), ht. 9 1/4, wd. 8 1/2 in.
\$500-700

516

Southwest Polychrome Pottery Olla, Acoma, first quarter 20th century, decorated with elaborate geometric, foliate designs, with four large birds perched on flowering branches, (chips at rim, reassembled, unrestored), ht. 11 1/2, wd. 12 in.
\$1,200-1,800

519

Acoma Polychrome Pottery Jar, first quarter 20th century, with stylized geometric and foliate designs, red bottom and inner rim, (reconstructed and restored from a number of broken pieces), ht. 12 1/4, wd. 11 1/2 in.
\$800-1,200

522

Southwest Polychrome Pottery Olla, Acoma, c. 1930s, with high shoulder and tapering rim, a red bottom and inner rim, decorated with black-on-cream abstract designs with some red in-fill, (minor paint loss), ht. 10 1/2, wd. 12 in.
\$1,000-1,500

517

Acoma Polychrome Pottery Bowl, first quarter 20th century, with a two-color checkerboard design adapted to a curved surface, ht. 6, wd. 9 1/2 in.

Provenance: Bertram and Ruth Malenka Collection, Belmont, Massachusetts.
\$400-500

520

Acoma Polychrome Pottery Jar, early second quarter 20th century, with stylized geometric and foliate designs in two colors on a cream ground, ht. 9, wd. 10 1/4 in.
\$600-800

523

Acoma Polychrome Pottery Jar, second quarter 20th century, with stylized geometric and foliate designs, ht. 7 1/2, wd. 10 in.
\$400-600



522



525

524

Acoma Polychrome Pottery Jar, second quarter 20th century, with stylized geometric and foliate designs, red bottom and inner rim, (paint losses), ht. 6, wd. 8 in.
\$300-400

525

Contemporary Acoma Polychrome Pottery Jar, c. 1950s, attributed to Lucy M. Lewis, unsigned, black-hatched geometric pattern on a white ground, (minor paint loss and a surface chip), ht. 6 1/2, wd. 8 1/2 in.

Provenance: Bertram and Ruth Malenka Collection, Belmont, Massachusetts.
\$300-400

526

Small Contemporary Acoma Pot, signed on the base "Lucy Lewis Acoma NM," decorated with four stylized figures on two sides, on a white ground, ht. 4 1/4 in.
\$400-600

527

Contemporary Acoma Polychrome Pottery Jar, attributed to Lucy M. Lewis (c. 1890-1992), "Acoma N. Mex." on base, painted in fine line geometric design, (paint loss), ht. 5 1/2, wd. 7 1/2 in.
\$400-600

528

Three Contemporary Acoma Pottery Eggs, the two taller signed on base "M. Romero Acoma NM," the shorter signed "C. Romero Acoma NM," ht. 2 1/2, 2 1/2, and 2 1/8 in.
\$200-300

529

Contemporary Acoma Pottery Vessel, signed "Jay Vallo Acoma" on base, orb form with small hole at top, ht. 8 1/2, wd. 9 in.
\$300-400

530

Contemporary Acoma Polychrome Pottery Vessel, signed on the base "M.C. Antonio Acoma NM," ht. 7, wd. 9 in.
\$300-400

531

Contemporary Acoma Pottery Jar, signed on the base "Juanita L. Peters," decorated with black fine line designs on a red ground, ht. 8 3/4, wd. 8 in.
\$400-500

532

Contemporary Polychrome Pottery Jar, Laguna, c. 2000, signed on the base "Y. Lucas," Yvonne Lucas, with traditional foliate and checker designs on a cream ground, ht. 9, wd. 10 in.

Provenance: Bertram and Ruth Malenka Collection, Belmont, Massachusetts.
\$500-700

533

Contemporary Laguna Pottery Jar, signed on the base "Sratyuwe G Paquin SNZ yr 2003," decorated with abstract designs in three colors, ht. 12 3/4, wd. 11 in.
\$700-900

534

Hopi Polychrome Pottery Bowl, the interior decorated with a stylized avian design, the rim with a black line, on a brick red/orange background, (fine crack, paint loss), ht. 3 3/4, wd. 10 1/2 in.

Provenance: Bertram and Ruth Malenka Collection, Belmont, Massachusetts; Dr. Albert Burke Collection, Chester, Connecticut; Paul Rabut, Westport, Connecticut.
\$400-600



536

535
Hopi Polychrome Pottery Bowl, decorated with a stylized avian design, (three fine cracks), ht. 3 1/2, wd. 11 3/4 in.
\$400-600

536
Large Hopi Polychrome Pottery Jar, first quarter 20th century, with high irregular shoulder and decorated with abstract avian designs, (restoration to rim), ht. 9 1/4, wd. 14 in.
\$1,800-2,400

537
Hopi Polychrome Pottery Seed Jar, first quarter 20th century, with highly stylized geometric and feather devices in black on a tan-colored slip, (one fine crack visible from the rim), ht. 4 1/2, wd. 9 1/2 in.
\$800-1,200

538
Contemporary Hopi Polychrome Pottery Jar, signed on the bottom "RS Nampeyo," Rachel Namingha Nampeyo (1903-1985), Hopi/Tewa, decorated with multiple abstract avian motifs on an orange ground, ht. 6 3/4, wd. 13 in.

Provenance: Bertram and Ruth Malenka Collection, Belmont, Massachusetts.
\$400-500

539
Hopi Polychrome Jar, first half 20th century, unsigned, attributed to Sadie Adams, decorated with abstract geometric and feather design in red and brown on a creamy orange ground, ht. 6 1/2, wd. 9 3/4 in.

Provenance: Bertram and Ruth Malenka Collection, Belmont, Massachusetts.
\$500-700

540
Contemporary Hopi Polychrome Pottery Lidded Jar, Sadie Adams, with flower hallmark on the base, a cookie jar type, decorated with a double avian motif on a cream ground, ht. 7 1/2 in.

Provenance: Bertram and Ruth Malenka Collection, Belmont, Massachusetts; purchased at the Wheelwright Museum auction, Santa Fe, August 21, 2008.
\$400-500

541
Contemporary Hopi Polychrome Pottery Olla, signed "Fawn," Eunice Navasie, the high shouldered form with black and brown abstract curvilinear designs on a buff-colored slip, (minor scratches), ht. 9 1/2, dia. 12 1/2 in.

Provenance: Bertram and Ruth Malenka Collection, Belmont, Massachusetts.
\$500-700

542
Contemporary Hopi Seed Jar, Jean Sahmie (b. 1949), marked on the base with her symbols, decorated with four separate wing motifs on a buff ground, ht. 6, wd. 13 in.
\$800-1,200

543
Contemporary Hopi Pottery Jar, Karen Charlie, inscribed on the base "KC" with artist logo and dated "2/94," ht. 7 1/4, wd. 9 in.
\$400-600

544
Contemporary Hopi Polychrome Pottery Jar, signed "Chereen Nampeyo," ht. 3 1/2, wd. 4 in.
\$200-300

545
Contemporary Hopi Polychrome Pottery Bowl, attributed to Pauline Setalla, with artist's monogram and paper label and date "1965" on base, ht. 3 3/4, wd. 8 in.
\$200-400

546
Contemporary Hopi Polychrome Pottery Jar, signed "Adelle Nampeyo," with abstract feather design in red and brown on a buff ground, ht. 3 1/2, wd. 4 1/2 in.
\$200-300



537



541



538



542

547
Contemporary Hopi Polychrome Pottery Jar, signed "Adelle L. Nampeyo," ht. 3 1/2, wd. 5 1/2 in.
\$200-400

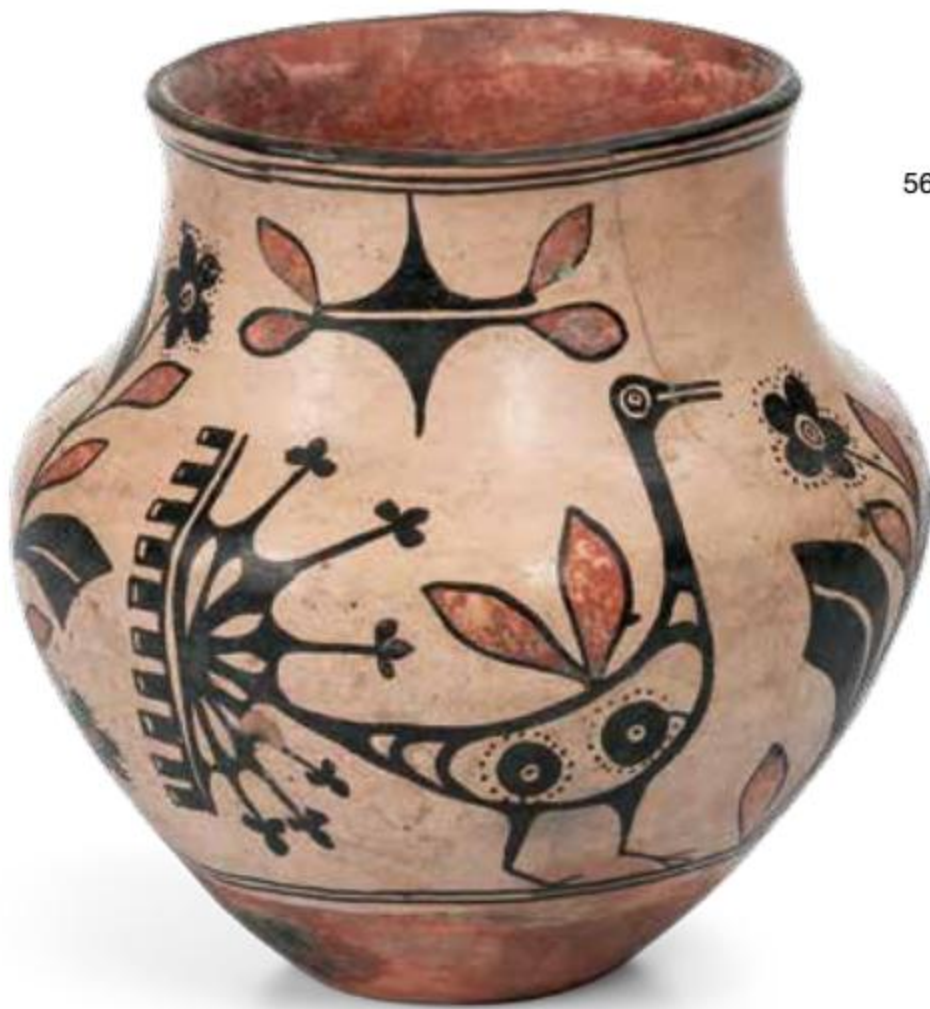
548
Contemporary Hopi Polychrome Pot, signed on the base "Pauline S," Pauline Navasie Setalla, decorated with abstract avian designs, ht. 7, wd. 6 1/2 in.
\$200-400

549
Contemporary Hopi Seed Jar, signed on the base, "Rayvin Nampeyo," decorated with a painted band of abstract avian designs, ht. 4 1/4, wd. 5 in.

Provenance: Andrea Fisher Fine Pottery Gallery, Santa Fe, New Mexico.
\$300-500

550
Contemporary Polychrome Hopi Pot, signed on the base "Juanita Healing," decorated with a wide band of geometric patterns, ht. 3 1/4, wd. 5 1/4 in.

Provenance: Andrea Fisher Fine Pottery Gallery, Santa Fe, New Mexico.
\$200-300



565

551

Small Contemporary Santa Clara Pot, signed on the base, "Maria Suazo Santa Clara Pueblo," decorated with a deeply cut Avanyu design, ht. 2, wd. 3 1/2 in.

Provenance: Andrea Fisher Fine Pottery Gallery, Santa Fe, New Mexico.
\$200-300

552

Contemporary Santa Clara Pot, signed on the base "Qura Garcia," black glaze with four imprinted bear paws below the rim, ht. 3 3/4, wd. 5 in.

Provenance: Andrea Fisher Fine Pottery Gallery, Santa Fe, New Mexico.
\$300-400

553

Contemporary Santa Clara Pottery Vessel, signed on the base "Tina Garcia," red glaze with two bear paw prints below the rim, ht. 7 3/4, wd. 7 1/2 in.

Provenance: Andrea Fisher Fine Pottery Gallery, Santa Fe, New Mexico.
\$800-1,200

554

Contemporary Santa Clara Pot, signed on the base, "Angela Baca," red glaze with regular cut grooved in the sides, ht. 3 1/2, wd. 5 in.

Provenance: Andrea Fisher Fine Pottery Gallery, Santa Fe, New Mexico.
\$300-400

555

Contemporary Santa Clara Blackware Bowl, signed on the base "Stella Chavarria Santa Clara," the side decorated with a deep-cut design, ht. 3 1/2, wd. 7 in.
\$200-400

556

Contemporary Santa Clara Black-on-black Pottery Jar, signed on the base "Margaret Garcia Santa Clara," with abstract feather designs, ht. 5, wd. 6 in.
\$200-400

557

Contemporary Santa Clara Pottery Vessel, signed "Margaret/Luther," Margaret & Luther Gutierrez, c. 1960, decorated on either side with a complex Avanyu design, ht. 8 3/4, wd. 6 1/4 in.
\$800-1,200

558

Contemporary Santa Clara Pottery Jar, signed on the base "Legoria Sta Clara Pueblo," Legoria Tafoya (1911-1984), black-on-black deep-cut frieze above the shoulder, (small chip on surface), ht. 6 1/2, wd. 8 1/2 in.
\$400-600

559

Contemporary Santa Clara Polychrome Pottery Jar, signed on the base "Lela Van Santa Clara Pue," Lela and Van Gutierrez, c. 1950s, ht. 5 1/2 in.
\$200-300

560

Contemporary Santa Clara Pottery Bowl, signed on the base "Helen Shupla Santa Clara Pueblo," black-on-black ware with deeply incised designs, ht. 3 1/4, wd. 5 3/4 in.
\$200-400

561

Contemporary Santa Clara Pottery Jar, signed "Mida Tafoya Santa Clara," black-on-black with a deeply incised Avanyu design, ht. 5 1/4, wd. 6 in.
\$200-300



571



572

562
Contemporary Santa Clara Pottery Vessel, signed on the base "Celestine Naranjo," black-on-blackware with abstract designs below the rim and a large Avanyu below the shoulder, ht. 12 in.
\$500-700

566
Large Contemporary Santo Domingo Pottery Jar, in the style of Felipita Aguilar Garcia, bold black geometric design on a red ground, (large repaired chip to rim), ht. 12 3/4, wd. 11 in.
\$600-900

570
Large Southwest Painted Pottery Dough Bowl, Santo Domingo, first quarter 20th century, the redware form painted on the outside with a black geometric band on a buff ground, (small rim crack), ht. 7 1/4, dia. 15 in.
\$2,500-3,500

563
Contemporary Santa Clara Pottery Bowl, signed on the base "Anita Suazo Santa Clara Pueblo," ht. 2 3/4, wd. 4 1/2 in.
\$200-400

567
Santo Domingo Polychrome Pottery Pitcher, decorated with floral devices and a bird in black, ht. 9 1/2 in.
\$500-700

571
Southwest Painted Pottery Dough Bowl, Santo Domingo, first quarter 20th century, the redware form painted on the exterior with a black and red geometric band on a buff ground, ht. 5 1/2, wd. 11 1/2 in.
\$1,200-1,800

564
Contemporary Santa Clara Pottery Bowl, signed on the base "Clara Suazo St. Clara Pueblo," black-on-black with deeply incised pattern, ht. 4, wd. 6 1/4 in.
\$200-400

568
Southwest Polychrome Pottery Jar, Santo Domingo, c. 1920s, a flat-bottom vase shape with black abstract decoration on a cream-colored slip, ht. 8 1/2 in.
\$300-500

572
Contemporary Santo Domingo Polychrome Jar, signed on the base "Robert Aguilar S.D.P.," fully decorated in foliate and abstract designs, ht. 13 1/4, wd. 11 in.
\$300-500

565
Southwest Polychrome Pottery Olla, Santo Domingo, c. 1900, with red and black abstract foliate and bird designs on a cream-colored slip, (damage), ht. 10, dia. 9 1/2 in.
\$800-1,200

569
Santo Domingo Polychrome Dough Bowl, first quarter 20th century, the redware form painted on the outside with a wide black geometric band on a buff ground, (large chip to rim), ht. 8, dia. 12 1/4 in.
\$1,000-1,500

573
Contemporary Santo Domingo Polychrome Pottery Jar, signed on the base "Tenorio Kewa NM," with a stamped impression of a hand on the inner base, ht. 8 1/2, wd. 7 1/2 in.
\$300-500



574

574

Southwest Polychrome Pottery Olla, Zia, c. first quarter 20th century, the high-shouldered form with flying bird motifs and double undulating bands on a buff-colored ground, ht. 11, wd. 13 in.

\$5,000-7,000

575

Southwest Polychrome Pottery Olla, Zia, c. last quarter 19th century, red underbody with black and red-brown abstract foliate devices and four large birds on a cream-colored slip, (chip at rim), ht. 12, dia. 12 1/2 in.

\$4,000-6,000



575

576

Large Southwest Polychrome Pottery Storage Jar, Zia, c. last quarter 19th century, repeat scrolling foliate and geometric designs, the neck band with repeating bird and flower pattern, patina of long use, (chips, wear), ht. 15, dia. 16 1/2 in.

Provenance: Skinner, September 24, 2011, Lot 574; Julius Gans, Southwest Arts and Crafts, 1936, includes two page description signed Julius Gans, "This is a very old 'tinajon' made in the pueblo of Zia and used for generations for storage of grains, etc. This tinajon has been in our possession for over fifteen years and is one of the finest museum specimens we have ever collected." Collected from Gans by Howard Whiting Beach (1882-1942), and descended in the family.

\$4,000-6,000

577

Southwest Polychrome Pottery Olla, Zia, c. 1900, the high-shoulder form with black and red-brown geometric and foliate design on a cream-colored ground, and red underbody, (paint loss and ladle wear at rim), ht. 11 1/2, wd. 13 in.

\$1,200-1,800



576



577



578

578

Southwest Polychrome Pottery Olla, Zia, decorated in four panels separated by a linked design, each with a bird in flight framed by a stepped geometric and floral design, ht. 9 1/2, wd. 9 1/4 in.

\$300-400

579

Contemporary Polychrome Zia Pottery Olla, signed "Lois Medina," high-shouldered form with red base, decorated with flowers, butterflies, and rainbirds above kivas, ht. 11 1/4, wd. 13 1/4 in.

Provenance: Bertram and Ruth Malenka Collection, Belmont, Massachusetts.

\$400-500

580

Southwest Polychrome Pottery Jar, Zuni, early 20th century, decorated with two friezes, the top red birds, lower heartline deer, (inner chip on rim), ht. 6, wd. 7 in.

\$400-600



581

581

Zuni Polychrome Serpent Jar, c. 1900, with scalloped band below the rim and four high-relief serpents framing heartline bears and possibly mountain lions, ht. 8, dia. 10 3/4 in.
\$4,000-5,000

582

Zuni Polychrome Pottery Olla, the high-shoulder form with two-color scroll decoration above and repeated heartline deer design below, (paint loss), ht. 7 1/4, wd. 9 1/4 in.
\$700-900

583

Zuni Polychrome Pottery Olla, c. 1900, the high-shoulder form with red and dark brown abstract curvilinear designs, crosses, hatch marks, and a row of small red birds below the center, (minor chips and paint loss), ht. 10 1/4, wd. 12 1/2 in.
\$3,000-4,000



583

584

Southwest Polychrome Pottery Olla, Zuni, c. 1900, the high-shoulder form with red and dark brown abstract curvilinear and foliate designs, (paint loss, rim chip and crack from the rim), ht. 10 1/2, wd. 11 1/2 in.
\$1,200-1,800

585

Zuni Polychrome Pottery Olla, c. 1900, the high-shoulder form with classic stylized volute and medallion pattern, with three heartline deer devices alternating with three rosettes, a repeat hatched design below the rim, (paint loss, and ladle wear at rim), ht. 9 1/2, wd. 11 in.
\$1,200-1,500

586

Southwest Polychrome Pottery Olla, with red bottom and inner rim, decorated with black-on-cream abstract designs, dominated by a central scroll frieze, (rim chips and small hole), ht. 11 1/2, wd. 12 in.
\$300-500

587

Tesuque Pottery Vessel, c. 1920, the buff surface with polychrome painted designs, with diamonds around the neck, two parrots with checkerboard body and orange tail feathers, together with large rainclouds and lightning, ht. 8 1/2, wd. 9 in.
\$1,200-1,800

588

Contemporary Southwest Pottery Vessel, signed on the base "McHorse," Christine McHorse, decorated below the wide rim with finely painted descending lines and raised painted motifs, ht. 6 1/4, wd. 7 1/2 in.

Provenance: Andrea Fisher Fine Pottery Gallery, Santa Fe, New Mexico.
\$800-1,200



584



585

589

Contemporary San Juan Pottery Vessel, signed on the base "Myrtle Cata," pumpkin-shaped vessel in orange/brown glaze, ht. 5 3/4, wd. 7 in.

Provenance: Andrea Fisher Fine Pottery Gallery, Santa Fe, New Mexico.

\$200-300

592

Early Hohokam Pottery Jar, c. AD 900, three-part stepped design, red on buff ground, (chips to rim, reassembled), ht. 7, wd. 8 1/2 in.

Provenance: Bertram and Ruth Malenka Collection, Belmont, Massachusetts.

\$300-400

593

Three Southwest Prehistoric Pottery Vessels, two Anasazi seed jars, with black-on-white painted designs, and a larger vessel with neck and two handles, decorated with black-on-cream designs, (rim loss and restoration), ht. 5, 6, and 8 3/4 in.

\$600-800

590

Anasazi Gray-on-white Pottery Pitcher, c. AD 740-850, gray line decorated pitcher, (bottom missing), ht. 10 in.

Provenance: Bertram and Ruth Malenka Collection, Belmont, Massachusetts; Milton Babcock Collection, Milton, Massachusetts, inventory number 276 present; found by Dr. G.E. Leontine at the Betatakin caves in the vicinity of Kayenta in Northern Arizona in the early 1900s.

\$400-600

591

Anasazi Painted Pottery Bowl, c. AD 1300-1400, painted overall in a repeated fret design, possibly originally a pitcher with top rim and handle ground down, (minor restoration and paint loss), ht. 5, wd. 7 in.

Provenance: Bertram and Ruth Malenka Collection, Belmont, Massachusetts.

\$400-500



587



593



594

Large Tularosa Black-on-white Olla, the bulbous body painted with interlocking geometric elements, with fine and bold lines and serrated bands, with triangular motifs, surmounted by a short neck, (restored), ht. 13 1/2, wd. 12 1/2 in.
\$1,200-1,800

595

Casas Grande Storage Olla, c. 1200-1450, painted in an overall geometric design in a bold well-balanced design using fine lines and block colors in a red-brown and black, with four protrusions, (restoration), ht. 8, wd. 8 1/4 in.
\$700-900

596

Casas Grande Storage Olla, c. 1200-1450, painted in an overall geometric design in a bold well-balanced design using fine lines and block colors in red and black on a cream ground, ht. 9, wd. 8 1/2 in.
\$800-1,200



594



596

597

Contemporary Casas Grande Seed Jar, signed on the bottom, "Armando Mora," decorated with abstract designs and two fish in black, ht. 7 3/4, wd. 7 in.

Provenance: Andrea Fisher Fine Pottery Gallery, Santa Fe, New Mexico.

\$400-600

598

Contemporary Casas Grande Pottery Jar, signed on the bottom, "Jose Quezada," decorated with abstract designs in brown and red, ht. 5 1/4, wd. 7 1/2 in.

Provenance: Andrea Fisher Fine Pottery Gallery, Santa Fe, New Mexico.

\$500-700

599

Contemporary Casas Grande Pottery Jar, signed on the bottom "Macario Ortiz, 8/93," decorated in black-on-black abstract designs, ht. 6 1/2, wd. 6 3/4 in.

Provenance: Andrea Fisher Fine Pottery Gallery, Santa Fe, New Mexico.

\$500-700

600

Western Apache Coiled Tray, c. 1900-10, with crosses and expanding star or six-petal design in black devil's claw, dia. 15 in.

Literature: Sarah and William Turnbaugh, *Indian Baskets* (Schiffer, 1986), on cover lower right, 2004 reprinting; William and Sarah Turnbaugh, *American Indian Baskets: Building and Caring for a Collection* (Schiffer, 2013), photo SW-87, p. 92.

\$600-800

601

Jicarilla Apache Basketry Water Jar, late 19th/early 20th century, coiled form with customary interior pitch coating, two braided horsehair lugs, and rawhide patch reinforcing the base, ht. 13, dia. 12 1/2 in.

Literature: William and Sarah Turnbaugh, *American Indian Baskets: Building and Caring for a Collection* (Schiffer, 2013), photo SW-118, p. 100.

\$400-600

602

Southeast Double-weave Twill-plaited Basket, Chitimacha, early 20th century, square-bottom basket, with flared rim, rivercane with natural dye colors, ht. 14 1/2 in.

\$400-600



600

603

Two Mojave Basketry Water Storage Jars, early 20th century, with carrying lugs and traces of pine pitch, ht. 13 1/2 and 7 1/4 in.

\$500-700

604

Pima Coiled Basketry Tray, c. 1900, with a four-petal squash blossom pattern, (minor rim loss and 1 inch tear), dia. 14 1/4 in.

\$300-500

605

Two Pima Coiled Basketry Trays, early 20th century, both with radiating maze pattern, (fading to the larger example), dia. 18 1/4 and 15 1/2 in.

\$500-700

606

Pima Coiled Basketry Bowl, early 20th century, flat bottom, raised sides with repeating geometric design, ht. 5 1/2, wd. 8 1/4 in.

\$300-500

607

Large Pima Basketry Bowl, c. 1900, flat bottom, high raised sides with repeating geometric design from the darkened center, ht. 6, dia. 16 1/4 in.

\$300-500

608

Pima Coiled Basketry Bowl, first quarter 20th century, the flat bottom and gently sloping sides, with a radiating linear design from a dark circular base, ht. 5, dia. 16 1/4 in.

Provenance: Bertram and Ruth Malenka Collection, Belmont, Massachusetts.

\$400-500

609

Panamint Shoshone Polychrome Bottleneck Basket, late 19th century, finely stitched coiling with mellow age-darkened toning of five ticked rim sections and zigzag "snake" design bands in dark bulrush plus red yucca root on willow, dia. 7 1/2 in.

Literature: William and Sarah Turnbaugh, *American Indian Baskets: Building and Caring for a Collection* (Schiffer, 2013), photo GB-17, p. 112.

\$1,000-1,500

610

Panamint Polychrome Basketry Bowl, c. 1900, with flared sides, decorated with stacked pyramid devices, highlighted with white quillwork toward the base, ht. 6, wd. 13 in.

\$800-1,200



611



613



617

611

Large Mono Lake Paiute Burden Basket, large conical shape with flared rim, rod construction with martynia stitches, decorated with bold triangular elements around a banded rim, with elongated checkerboard lozenges and bold zigzag around rim, ht. 15, wd. 19 in.
\$2,000-3,000

612

Two Northwest California Polychrome Lidded Baskets, Hupa, sold with a small lidded Northwest Coast basket, ht. 6, 4 1/4, and 2 3/4 in.
\$300-400

613

Large California Winnowing Tray, Pomo, early 20th century, large tray decorated with four geometric bands radiating from the center, (loss to some of the rim), dia. 21 3/4 in.
\$800-1,200

614

Large California Polychrome Basket, c. 1900, tightly woven coiled basket with a flat bottom and high sides, decorated around the sides with two zigzag bands, and four narrow vertical bands, (minor loss to rim), ht. 6 1/2, dia. 13 1/2 in.
\$500-700

615

Three Northwest Coast Lidded Baskets, Makah, c. 1900, flat bottomed, with colored geometric patterns on sides and lids, ht. 4, 3 1/4, and 2 in.
\$300-500

616

Northwest Coast Twined Bottle and Basket, Tlingit, c. 1900, small rattle-top basket with multicolored banded design, (damage), with lidded glass basketry bottle, ht. 4 and 7 1/4 in.
\$300-400

617

Northwest Coast Twined Basketry Teapot, Tlingit, c. 1900, decorated with banded geometric designs on lid and sides, (missing handle), ht. 3 1/2 in.
\$300-400

618

Northwest Polychrome Coiled and Imbricated Lidded Basket, Salish, c. late 19th century, the tapered rectangular form with vertical multicolored checkered and stacked devices on a medium brown ground, ht. 12, wd. 11, lg. 22 in.
\$300-400

619

Northwest Coast Polychrome Rattle-top Twined Basket, Tlingit, c. 1900, rattle lid, with colored geometric designs on lid and basket, ht. 6 1/2, wd. 7 1/2 in.
\$1,000-1,500

620

Northwest Coast Polychrome Rattle-top Twined Basket, Tlingit, c. 1900, rattle lid, with colored, banded and spiral geometric designs on lid and basket, ht. 3 1/2, wd. 6 1/4 in.
\$500-700

621

Northwest Coast Polychrome Rattle-top Twined Basket, Tlingit, c. 1900, rattle lid, with banded geometric designs on lid and basket, ht. 4 1/4, wd. 5 1/4 in.
\$800-1,200

622

Northwest Coast Polychrome Rattle-top Twined Basket, Tlingit, c. 1900, rattle lid, with banded geometric designs on lid and basket, (minor split on lid), ht. 3 1/2, wd. 5 in.
\$500-700

623

Aleutian Islands Twined Lidded Basket, early 20th century, tightly woven, decorated with tree-like devices using colored commercial yarn, collected from 1916-18, ht. 9 1/2, wd. 8 in.
\$700-900

624

Aleutian Island Twined Lidded Basket, early 20th century, tightly woven, decorated with diamond devices using colored commercial yarn, collected from 1916-18, ht. 4 1/4, wd. 5 1/4 in.
\$400-500

End of Sale 3316B



619



620



622

Conditions of Sale

1. Some of the lots in this sale are offered subject to a reserve. The reserve is a confidential minimum price agreed upon by the consignor and Skinner, Inc. below which the lot will not be sold. In most cases, the reserve will be set below the estimated range, but in no case will it exceed the estimates listed. A representative of Skinner, Inc. will execute such reserves by bidding for the consignor. In any event and whether or not a lot is subject to a reserve, the auctioneer may reject any bid or raise not commensurate with the value of such lot.
 2. All property is sold "as is," and neither the auctioneer nor any consignor makes any warranties or representation of any kind or nature with respect to the property, and in no event shall they be responsible for the correctness, nor deemed to have made any representation or warranty, of description, genuineness, authorship, attribution, provenance, period, culture, source, origin, or condition of the property and no statement made at the sale, or in the bill of sale, or invoice or elsewhere shall be deemed such a warranty of representation or an assumption of liability.
 3. Except as provided in paragraph 1 above, the highest bidder as determined by the auctioneer shall be the purchaser. In the case of a disputed bid, the auctioneer shall have sole discretion in determining the purchaser and may also, at his or her election, withdraw the lot or reoffer the lot for sale. The auctioneer shall have sole discretion to refuse any bid, or refuse to acknowledge any bidder. Any bidder that plans on spending in excess of \$100,000 should make arrangements with the accounting department at least five (5) days in advance of the sale, as a deposit may be required to participate.
 4. All merchandise purchased must be paid for and removed from the premises the day of the auction. Skinner Inc. may impose, and the purchaser agrees to pay, a monthly interest charge of 1.5% of the purchase price of any lot or item lot not paid for within thirty-five (35) days of the date of sale.
- Skinner, Inc. shall have no liability for any damage or loss to property left on its premises for more than three (3) days from the date of sale. If any property has not been removed within three (3) days from the date of sale, at the option of Skinner, Inc. (a) Skinner Inc., may impose, and the purchaser agrees to pay, a monthly storage charge of 1.5% of the purchase price of any lot or portion of a lot not removed within the three days, and/or (b) Skinner Inc. may place the merchandise in a subsequent auction, without Reserve, to be sold to the highest bidder, and after deducting the standard commission and any additional charges that may apply, remit the proceeds to the purchaser.
5. Skinner accepts cash or check for payment. Personal checks will be acceptable only if credit has been established with Skinner, Inc. or if a bank authorization has been received guaranteeing a personal check. Skinner, Inc. reserves the right to hold merchandise purchased by personal check until the check has cleared the bank. The purchaser agrees to pay Skinner, Inc. a handling charge of \$25.00 for any check dishonored by the drawee. Please contact Accounting for additional payment methods. Skinner does not accept payment by credit card for merchandise purchases.
 6. If the purchaser breaches any of its obligations under these Conditions of Sale, including its obligation to pay in full the purchase price of all items for which it was the highest successful bidder, Skinner Inc. may exercise all of its rights and remedies under the law including, without limitation, (a) canceling the sale and applying any payments made by the purchaser to the damages caused by the purchaser's breach, and/or (b) offering at public auction, without reserve, any lot or item for which the purchaser has breached any of its obligations, including its obligation to pay in full the purchase price, holding the purchaser liable for any deficiency plus all costs of sale.
 7. In no event will the liability of Skinner, Inc. to any purchaser with respect to any item exceed the purchase price actually paid by such purchaser for such item.
 8. Shipping is the responsibility of the purchaser. Upon request, our staff will provide the list of shippers who deliver to destinations within the United States and overseas. Some property that is sold at auction can be subject to laws governing export from the U.S., such as items that include material from some endangered species. Import restrictions from foreign countries are subject to these same governing laws. Granting of licensing for import or export of goods from local authorities is the sole responsibility of the buyer. Denial or delay of licensing will not constitute cancellation or delay in payment for the total purchase price of these lots.
 9. Sales in Massachusetts, Florida, and New York are subject to the respective current sales taxes. Dealers, museums, and other qualifying parties may be exempt from sales tax upon submission of proper documentation.
 10. A premium equal to 23% of the final bid price up to and including \$100,000, plus 20% of the final bid price from \$100,001 up to and including \$1,000,000, plus 12% of the final bid price from \$1,000,001 and over will be applied to each lot sold, to be paid by the buyer as part of the purchase price.
 11. Bidding on any item indicates your acceptance of these terms and all other terms printed within, posted, and announced at the time of sale whether bidding in person, through a representative, by phone, by Internet, or other absentee bid.
 12. Skinner, Inc. and its consignors make no warranty or representation, express or implied, that the purchaser will acquire any copyright or reproduction rights to any lot sold. Skinner, Inc. expressly reserves the right to reproduce any image of the lots sold in this catalog. The copyright in all images, illustrations and written material produced by or for Skinner, Inc. relating to a lot, including the contents of this catalog, is, and shall remain at all times, the property of Skinner, Inc. and shall not be used by the purchaser, nor by anyone else, without our prior written consent.
 13. These conditions of sale shall be governed by the laws of the Commonwealth of Massachusetts (excluding the laws applicable to conflicts or choice of law). The buyer/bidder agrees that any suit for the enforcement of this agreement may be brought, and any action against Skinner in connection with the transactions contemplated by this agreement shall be brought, in the courts of the Commonwealth of Massachusetts or any federal court sitting therein. The bidder/buyer consents to the exclusive jurisdiction of such courts and waives objections that it may now or hereafter have to the venue of any such suit.

Absentee Bid Form

Sale Title _____ Sale Date _____

First Time Bidder? ☐ YES ☐ NO

Customer # _____

Name (Please Print) _____ Business Name _____

Address _____ check if change in address ☐

City _____ State _____ Zip Code _____

Phone # _____ Alternate # _____ email _____

I wish to place the following bids in the sale listed above. I understand that Skinner, Inc. will execute bids as a convenience, and will not be held responsible for any errors or failure to execute bids. I understand that my bids are executed and accepted as per Conditions of Sale as printed in the catalog of this sale.

Signature (Required) _____ **Date** _____

Lot #	Description	Bid Price

Bid confirmation via email? YES ☐ NO ☐

FOR OFFICE USE

Marlborough Boston Phone Fax Mail Person Employee:

SKINNER

63 Park Plaza
Boston, MA
02116
617.350.5400
Fax 617.350.5429

274 Cedar Hill Street
Marlborough, MA
01752
508.970.3000
Fax 508.970.3100

www.skinnerinc.com

Board of Directors

Chairman of the Board

Stephen L. Fletcher

Bear Albright

John Deighton

Karen M. Keane

Andrew Payne

Ruth Kennedy Sudduth

Executive Management

President/Chief Executive Officer

Karen M. Keane

Chief Financial Officer

Kristina Sutton, CPA

Executive Vice President

Stephen L. Fletcher

Managing Director

Marie Keep

Senior Vice Presidents

Marie Keep

Kerry Shrives

Stuart G. Slavid

Vice Presidents

Eric Jones

Gloria Lieberman

Jane D. Prentiss

Robin S.R. Starr

Regional Offices

Florida:

305.503.4423 florida@skinnerinc.com

Maine and Northern New England:

Elizabeth Y. Turner

207.380.2000 eturner@skinnerinc.com

New York: Katie Banser-Whittle

212.787.1114 kbanser-whittle@skinnerinc.co

Departments

20th Century Design

Dan Ayer

Jane D. Prentiss

20thcentury@skinnerinc.com

508.970.3253

American & European Paintings & Prints

Robin S.R. Starr

Elizabeth C. Haff

Kathleen M. Leland

Brianna Lovensheimer

paintings@skinnerinc.com

508.970.3206

American Furniture & Decorative Arts

Stephen L. Fletcher

Chris Barber

Christopher D. Fox

americana@skinnerinc.com

508.970.3200

American Indian & Ethnographic Art

Michael Evans

indian@skinnerinc.com

508.970.3254

Antique Motor Vehicles

Jane D. Prentiss

antiquemotorvehicles@skinnerinc.com

508.970.3253

Asian Works of Art

Judith Dowling

Helen Eagles

Suhyung Kim

asian@skinnerinc.com

508.970.3263

Books & Manuscripts

Devon Eastland

books@skinnerinc.com

508.970.3293

Ceramics

Stuart G. Slavid

ceramics@skinnerinc.com

508.970.3203

Clocks, Watches & Scientific Instruments

Jonathan Dowling

clocks@skinnerinc.com

508.970.3201

Coins & Currency

Kyle Johnson

coins@skinnerinc.com

508.970.3191

Discovery Auctions

Carly Babione

Kyle Johnson

discovery@skinnerinc.com

508.970.3202

European Furniture & Decorative Arts

Stuart G. Slavid

Stephanie Opolski

european@skinnerinc.com

508.970.3203

Historic Arms & Militaria

Joel Bohy

militaria@skinnerinc.com

508.970.3215

Jewelry

Kaitlin Shinnick

John Colasacco

Gloria Liebermann

Selena Shabot

jewelry@skinnerinc.com

617.874.4313

Judaica

Kerry Shrives

judaica@skinnerinc.com

508.970.3256

Musical Instruments

Adam Tober

music@skinnerinc.com

508.970.3216

Oriental Rugs & Carpets

Lawrence Kearney

rugs@skinnerinc.com

508.970.3247

Photographs

photographs@skinnerinc.com

508.970.3264

Silver

Stuart G. Slavid

silver@skinnerinc.com

508.970.3203

Wines & Spirits

Marie Keep

Joseph Hyman

Anna Ward

finewines@skinnerinc.com

508.970.3296

Auction Services

Consignments

Appraisal & Auction Services

LaGina Austin

Christine E. Finn

Rachel Kingsley

Alison Ritacco

508.970.3299

Consignment Services

Tara Lima

Carol Zeigler

508.970.3204

Accounting

William Madden

508.970.3266

Absentee & Telephone Bidding

Boston: 617.874.4318

Marlborough: 508.970.3211

Discovery: 508.970.3208

Marketing, Media & Communications

Jeffrey R. Antkowiak

Mia Cesar

Kristina M. Harrison

Mireille Lyall

Cheryl Richards Photography

Penina Seigel

Valerie Worth

Skinner Online

Kerry Shrives

Florentina Gutierrez

Judie Ochsner

Nicole Nicas Rovner

Valerie Worth

online@skinnerinc.com

508.970.3279

Catalog Sales

508.970.3000

Exhibitions & Property

Boston:

Julia M. Dry

Catherine Cawley

Susan Janowsky

Hannah Marks

Receptionist

Olivia Joy

617.350.5400

Marlborough:

Warehouse

Frederic Trottier

508.970.3209

Samantha Heighton

Receptionist

William Debordes-Jackson

508.970.3000

Transportation

Eric Jones

508.970.3229

Auctioneers

Chris Barber, John Colasacco,

Stephen L. Fletcher, Karen M. Keane,

Marie Keep, Kerry Shrives, Stuart G. Slavid,

Robin S.R. Starr

SKINNER

63 Park Plaza
Boston, MA 02116
617.350.5400
Fax 617.350.5429

274 Cedar Hill Street
Marlborough, MA 01752
508.970.3000
Fax 508.970.3100

Florida
305.503.4423

New York
212.787.1113





SKINNER